

Anti-Phospho-NMDA Receptor NR2B Subunit (Ser1166) Grin2b Antibody

Catalog Number: P01883

About GRIN2B

The NMDA receptor (NMDAR) plays an essential role in memory, neuronal development and it has also been implicated in several disorders of the central nervous system including Alzheimer's, epilepsy and ischemic neuronal cell death (Grosshans et al., 2002; Wenthold et al., 2003; Carroll and Zukin, 2002). Overexpression of the NR2B-subunit of the NMDA Receptor has been associated with increases in learning and memory while aged, memory impaired animals have deficiencies in NR2B expression (Clayton et al., 2002a; Clayton et al., 2002b). Phosphorylation of Ser-1166 is thought to play an essential role in memory and neuronal development.

Overview

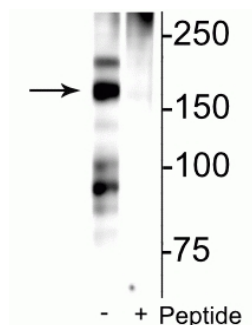
Product Name	Anti-Phospho-NMDA Receptor NR2B Subunit (Ser1166) Grin2b Antibody
Reactive Species	Mouse, Rat
Description	Boster Bio Anti-Phospho-NMDA Receptor NR2B Subunit (Ser1166) Grin2b Antibody (Catalog # P01883). Tested in WB applications. This antibody reacts with Mouse, Rat.
Application	WB
Clonality	Polyclonal 608
Formulation	10 mM HEPES (pH 7.5), 150 mM NaCl, 100 µg per ml BSA and 50% glycerol.
Storage Instructions	Storage at -20°C is recommended, as aliquots may be taken without freeze/thawing due to presence of 50% glycerol. Stable for at least 1 year at -20°C. After date of receipt, stable for at least 1 year at -20°C.
Host	Rabbit
Uniprot ID	Q00960

Technical Details

Immunogen	Synthetic phospho-peptide corresponding to amino acid residues surrounding Ser1166 of the NR2B subunit of the rat NMDA receptor, conjugated to keyhole limpet hemocyanin (KLH). Immunogen species is Rat.
Predicted Reactive Species	Canine, Human, Primate, Xenopus
Cross Reactivity	No cross reactivity with other proteins.
Isotype	IgG
Form	Liquid
Concentration	0.5-1mg/ml, actual concentration vary by lot. Use suggested dilution ratio to decide dilution procedure.

Purification	Prepared from pooled rabbit serum by affinity purification via sequential chromatography on phospho and non-phosphopeptide affinity columns.
Suggested Dilutions	<p>Dilute the sample so that the expected range of concentrations fall within the detection range of this kit.</p> <p>If the expected range of concentration is unknown, a pilot test should be conducted to decide the optimal dilution ratio for your samples.</p> <p>Some PubMed article(s) citing the expression level of this target are as follows:</p> <p>Boster Bio's internal QC testing used:</p> <p>WB: 1:250</p>

Anti-Phospho-NMDA Receptor NR2B Subunit (Ser1166) Grin2b Antibody (P01883) Images



Western blot of rat hippocampal lysate showing specific immunolabeling of the ~180 kDa NR2B subunit of the NMDAR phosphorylated at Ser¹¹⁶⁶ in the first lane (-). Phosphospecificity is shown in the second lane (+) where immunolabeling is blocked by preadsorption of the phosphopeptide used as the antigen, but not by the corresponding non-phosphopeptide (not shown).

Submit a product review to Biocompare.com

Submit a review of this product to Biocompare.com to receive a \$20 Amazon.com giftcard! Your reviews help your fellow scientists make the right decisions. Thank you for your contribution.



Anti-Phospho-NMDA Receptor NR2B Subunit (Ser1166) Grin2b Antibody