

Anti-Phospho-Olig2 (Ser10,13,14) Antibody

Catalog Number: P02247

About OLIG2

Olig2 is a well conserved bHLH transcription factor that shows both anti-neural functions and pro-neural functions at different stages in the formation of the oligodendrocyte lineage (Sun et al., 2011). Olig2 is expressed in 100% of the human diffuse gliomas irrespective of grade and required for intracranial tumor formation in a genetically relevant model of malignant glioma (Ligon et al., 2004; Ligon et al., 2007). A developmentally regulated triple serine motif at positions 10, 13 and 14 in the amino terminus is well conserved across species ranging from humans to zebrafish and is essential for Olig2 proliferative function in both normal and malignant neural progenitors (Sun et al., 2011). All three serine residues must be mutated to achieve a strong loss-of-function or gain-of-function phenotype, suggesting that the phosphorylation state of Olig2 represents a significant conformational change in the amino terminus (Sun et al., 2011).

Overview

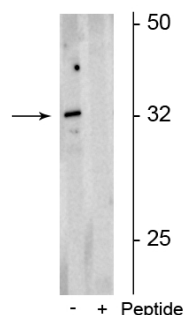
Product Name	Anti-Phospho-Olig2 (Ser10,13,14) Antibody
Reactive Species	Mouse, Rat
Description	Boster Bio Anti-Phospho-Olig2 (Ser10, 13, 14) Antibody (Catalog # P02247). Tested in WB applications. This antibody reacts with Mouse, Rat.
Application	WB
Clonality	Polyclonal 608
Formulation	10 mM HEPES (pH 7.5), 150 mM NaCl, 100 µg per ml BSA and 50% glycerol.
Storage Instructions	Storage at -20°C is recommended, as aliquots may be taken without freeze/thawing due to presence of 50% glycerol. Stable for at least 1 year at -20°C. After date of receipt, stable for at least 1 year at -20°C.
Host	Rabbit
Uniprot ID	Q13516

Technical Details

Immunogen	Synthetic phospho-peptide corresponding to amino acid residues surrounding Ser10,13,14 of human Olig2, conjugated to keyhole limpet hemocyanin (KLH). Immunogen species is Human.
Predicted Reactive Species	Guinea Pig, Human, Primate, Zebrafish
Cross Reactivity	No cross reactivity with other proteins.
Isotype	IgG
Form	Liquid

Concentration	0.5-1mg/ml, actual concentration vary by lot. Use suggested dilution ratio to decide dilution procedure.
Purification	Prepared from pooled rabbit serum by affinity purification via sequential chromatography on phospho and non-phosphopeptide affinity columns.
Suggested Dilutions	<p>Dilute the sample so that the expected range of concentrations fall within the detection range of this kit.</p> <p>If the expected range of concentration is unknown, a pilot test should be conducted to decide the optimal dilution ratio for your samples.</p> <p>Some PubMed article(s) citing the expression level of this target are as follows:</p> <p>Boster Bio's internal QC testing used:</p> <p>WB: 1:1000</p> <p>IHC: 1:1000</p>

Anti-Phospho-Olig2 (Ser10,13,14) Antibody (P02247) Images



Western blot of rat neonatal brain lysate showing specific immunolabeling of the ~32 kDa form of the Olig2 protein phosphorylated at Ser^{10,13,14} in the first lane (-). Phosphospecificity is shown in the second lane (+) where Immunolabeling is blocked by the phosphopeptide used as the antigen but not by the corresponding non-phosphopeptide (not shown).

Submit a product review to Biocompare.com

Submit a review of this product to Biocompare.com to receive a \$20 Amazon.com giftcard! Your reviews help your fellow scientists make the right decisions. Thank you for your contribution.



Anti-Phospho-Olig2 (Ser10,13,14) Antibody