

Anti-Phospho-Synaptotagmin (Thr202) Syt1 Antibody

Catalog Number: P02314

About SYT1

Synaptotagmin is widely regarded as the primary calcium sensor for synaptic vesicle exocytosis (Fernandez-Chacon et al., 2001; Wang et al., 2003). Moreover, recent studies indicate that the protein also plays a key role in endocytosis (Poskanzer et al., 2003). Synaptotagmin can be phosphorylated by multiple protein kinases and this may play a key role in modulation of synaptotagmin's ability to influence both the exocytotic and endocytotic components of synaptic transmission (Hilfiker et al., 1999; Lee et al., 2004).

Overview

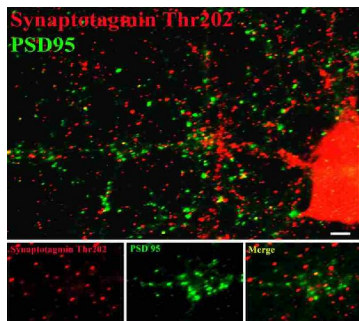
| | |
|----------------------|--|
| Product Name | Anti-Phospho-Synaptotagmin (Thr202) Syt1 Antibody |
| Reactive Species | Rat |
| Description | Boster Bio Anti-Phospho-Synaptotagmin (Thr202) Syt1 Antibody (Catalog # P02314). Tested in WB, ICC applications. This antibody reacts with Rat. |
| Application | ICC, WB |
| Clonality | Polyclonal 608 |
| Formulation | 10 mM HEPES (pH 7.5), 150 mM NaCl, 100 µg per ml BSA and 50% glycerol. |
| Storage Instructions | Storage at -20°C is recommended, as aliquots may be taken without freeze/thawing due to presence of 50% glycerol. Stable for at least 1 year at -20°C. After date of receipt, stable for at least 1 year at -20°C. |
| Host | Rabbit |
| Uniprot ID | P21707 |

Technical Details

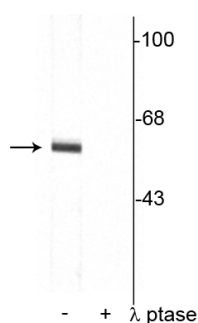
| | |
|----------------------------|--|
| Immunogen | Synthetic phospho-peptide corresponding to amino acid residues surrounding Thr202 of rat synaptotagmin, conjugated to keyhole limpet hemocyanin (KLH). Immunogen species is Rat. |
| Predicted Reactive Species | Bovine, Canine, Chicken, Human, Mouse, Primate, Zebrafish |
| Cross Reactivity | No cross reactivity with other proteins. |
| Isotype | IgG |
| Form | Liquid |
| Concentration | 0.5-1mg/ml, actual concentration vary by lot. Use suggested dilution ratio to decide dilution procedure. |
| Purification | Prepared from pooled rabbit serum by affinity purification via sequential chromatography on |

| | |
|---------------------|---|
| | phospho and non-phosphopeptide affinity columns. |
| Suggested Dilutions | <p>Dilute the sample so that the expected range of concentrations fall within the detection range of this kit.</p> <p>If the expected range of concentration is unknown, a pilot test should be conducted to decide the optimal dilution ratio for your samples.</p> <p>Some PubMed article(s) citing the expression level of this target are as follows:</p> <p>Boster Bio's internal QC testing used:</p> <p>WB: 1:1000</p> <p>ICC: 1:400</p> |

Anti-Phospho-Synaptotagmin (Thr202) Syt1 Antibody (P02314) Images



Immunostaining of 14 DIV rat cortical neurons showing synaptotagmin when phosphorylated at Thr²⁰² in red and PSD95 in green.



Western blot of rat cortical lysate showing specific immunolabeling of the ~62 kDa synaptotagmin phosphorylated at Thr²⁰² in the first lane (-). Phosphospecificity is shown in the second lane (+) where the immunolabeling is completely eliminated by blot treatment with *lambda* phosphatase (gamma-Ptase, 1200 units for 30 minutes).

Submit a product review to Biocompare.com

Submit a review of this product to Biocompare.com to receive a \$20 Amazon.com giftcard! Your reviews help your fellow scientists make the right decisions. Thank you for your contribution.



Anti-Phospho-Synaptotagmin (Thr202) Syt1 Antibody