

Anti-Phospho-p120 (Tyr228) Polyclonal Antibody

Catalog Number: P02333

About CTNND1

May be a regulated effector of stress granule assembly. Phosphorylation-dependent sequence-specific endoribonuclease in vitro. Cleaves exclusively between cytosine and adenine and cleaves MYC mRNA preferentially at the 3'-UTR. ATP- and magnesium-dependent helicase. Unwinds preferentially partial DNA and RNA duplexes having a 17 bp annealed portion and either a hanging 3' tail or hanging tails at both 5'- and 3'-ends. Unwinds DNA/DNA, RNA/DNA, and RNA/RNA substrates with comparable efficiency. Acts unidirectionally by moving in the 5' to 3' direction along the bound single-stranded DNA.

Tao WA, et al. (2005) Nat Methods. 2(8): 591-598.

Zheng H, et al. (2005) Mol Cell Proteomics. 4(6):721-730.

Beausoleil SA, et al. (2004) Proc Natl Acad Sci U S A. 101 (33): 12130-12135.

Tourrihre H, et al. (2003) J Cell Biol. 160 (6): 823-831.

Overview

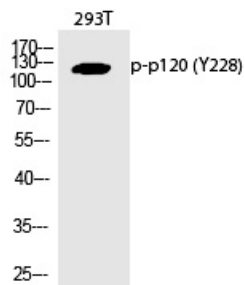
Product Name	Anti-Phospho-p120 (Tyr228) Polyclonal Antibody
Reactive Species	Human, Mouse, Rat
Description	Boster Bio Anti-Phospho-p120 (Tyr228) Polyclonal Antibody (Catalog # P02333). Tested in WB, IHC, IF, ELISA applications. This antibody reacts with Human, Mouse, Rat.
Application	ELISA, IF, IHC, WB
Clonality	Polyclonal
Formulation	Liquid in PBS containing 50% glycerol, 0.5% BSA and 0.02% sodium azide.
Storage Instructions	Store at -20°C for one year. For short term storage and frequent use, store at 4°C for up to one month. Avoid repeated freeze-thaw cycles.
Host	Rabbit
Uniprot ID	O60716

Technical Details

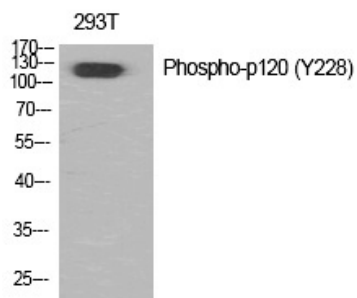
Immunogen	Synthesized peptide derived from human p120 around the phosphorylation site of Y228.
Predicted Reactive Species	Bovine, Chicken, Xenopus Laevis, Xenopus Tropicalis, Zebrafish
Form	Liquid
Concentration	1 mg/ml

Purification	The antibody was affinity-purified from rabbit antiserum by affinity-chromatography using epitope-specific immunogen.
Suggested Dilutions	<p>Dilute the sample so that the expected range of concentrations fall within the detection range of this kit.</p> <p>If the expected range of concentration is unknown, a pilot test should be conducted to decide the optimal dilution ratio for your samples.</p> <p>Some PubMed article(s) citing the expression level of this target are as follows:</p> <p>Boster Bio's internal QC testing used:</p> <p>Western blotting: 1/500 - 1/2000</p> <p>Immunohistochemistry: 1/100 - 1/300</p> <p>Immunofluorescence: 1/200 - 1/1000</p> <p>ELISA: 1/10000</p> <p>Not yet tested in other applications.</p>

Anti-Phospho-p120 (Tyr228) Polyclonal Antibody (P02333) Images



Western Blot analysis of 293T cells using Phospho-p120 (Y228) Polyclonal antibody



Western Blot analysis of 293T cells using Phospho-p120 (Y228) Polyclonal antibody

Submit a product review to Biocompare.com

Submit a review of this product to Biocompare.com to receive a \$20 Amazon.com giftcard! Your reviews help your fellow scientists make the right decisions. Thank you for your contribution.



Anti-Phospho-p120 (Tyr228) Polyclonal Antibody