

Anti-Phospho-GABAA Receptor gamma2 (Ser327) GABRG2 Antibody

Catalog Number: P02361

About GABRG2

Gamma-aminobutyric acid (GABA) is the primary inhibitory neurotransmitter in the central nervous system. There are two major classes of GABA receptors: the GABA-A and the GABA-B subtype of receptors. GABA-A-Rs are important therapeutic targets for a range of sedative, anxiolytic, and hypnotic agents and are implicated in several diseases including epilepsy, anxiety, depression, and substance abuse. The GABA-A-R is a multimeric subunit complex. To date six alphas, four betas and four gammas, plus alternative splicing variants of some of these subunits, have been identified (Olsen and Tobin, 1990; Whiting et al., 1999; Ogris et al., 2004). Injection in oocytes or mammalian cell lines of cRNA coding for alpha- and beta-subunits results in the expression of functional GABA-A-Rs sensitive to GABA. However, coexpression of a gamma-subunit is required for benzodiazepine modulation. It has recently been suggested that PKCepsilon regulates the sensitivity of GABA-A alpha1beta2gamma2 receptors to ethanol and benzodiazepines through phosphorylation of serine 327 in the large intracellular loop of gamma2 (Qi et al., 2007)

Overview

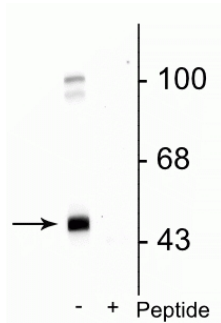
Product Name	Anti-Phospho-GABAA Receptor gamma2 (Ser327) GABRG2 Antibody
Reactive Species	Mouse, Rat
Description	Boster Bio Anti-Phospho-GABAA Receptor gamma2 (Ser327) GABRG2 Antibody (Catalog # P02361). Tested in WB applications. This antibody reacts with Mouse, Rat.
Application	WB
Clonality	Polyclonal 608
Formulation	10 mM HEPES (pH 7.5), 150 mM NaCl, 100 µg per ml BSA and 50% glycerol.
Storage Instructions	Storage at -20°C is recommended, as aliquots may be taken without freeze/thawing due to presence of 50% glycerol. Stable for at least 1 year at -20°C. After date of receipt, stable for at least 1 year at -20°C.
Host	Rabbit
Uniprot ID	P18508

Technical Details

Immunogen	Synthetic phospho-peptide corresponding to amino acid residues surrounding Ser327 of the gamma2 subunit of rat GABAA receptor, conjugated to keyhole limpet hemocyanin (KLH). Immunogen species is Rat.
Predicted Reactive Species	Bovine, Canine, Chicken, Human, Primate
Cross Reactivity	No cross reactivity with other proteins.
Isotype	IgG

Form	Liquid
Concentration	0.5-1mg/ml, actual concentration vary by lot. Use suggested dilution ratio to decide dilution procedure.
Purification	Prepared from pooled rabbit serum by affinity purification via sequential chromatography on phospho and non-phosphopeptide affinity columns.
Suggested Dilutions	Dilute the sample so that the expected range of concentrations fall within the detection range of this kit. If the expected range of concentration is unknown, a pilot test should be conducted to decide the optimal dilution ratio for your samples. Some PubMed article(s) citing the expression level of this target are as follows: Boster Bio's internal QC testing used: WB: 1:1000

Anti-Phospho-GABAA Receptor gamma2 (Ser327) GABRG2 Antibody (P02361) Images



Western blot of rat cortical lysate showing specific immunolabeling of the ~45 kDa GABA_Agamma₂ protein phosphorylated at Ser³²⁷ in the first lane (-). Phosphospecificity is shown in the second lane (+) where immunolabeling is blocked by preadsorption of the phosphopeptide used as the antigen, but not by the corresponding non-phosphopeptide (not shown).

Submit a product review to Biocompare.com

Submit a review of this product to Biocompare.com to receive a \$20 Amazon.com giftcard! Your reviews help your fellow scientists make the right decisions. Thank you for your contribution.



Anti-Phospho-GABAA Receptor gamma2 (Ser327) GABRG2 Antibody