

Anti-Phospho-14-3-3 Protein (Ser58) YWHAB Antibody

Catalog Number: P02431

About YWHAB

14-3-3 proteins are a family of highly conserved proteins that appear to have multiple roles in cell signaling (Bridges and Moorhead, 2005). The proteins are abundantly expressed in the brain and have been detected in the cerebrospinal fluid of patients with different neurological disorders (Berg et al., 2003). 14-3-3 proteins bind protein ligands that are typically phosphorylated on serine or threonine residues and regulate the functions of these binding partners by a number of different mechanisms (Silhan et al., 2004; Dougherty and Morrison, 2004). The 14-3-3 proteins affect a diverse array of cellular processes including the cell cycle and transcription, signal transduction and intracellular trafficking. These functions of 14-3-3 proteins are facilitated by, if not dependent on, its dimeric structure. Recent work has demonstrated that the dimeric status of the 14-3-3 protein is regulated by site-specific serine phosphorylation (Woodcock et al., 2003)

Overview

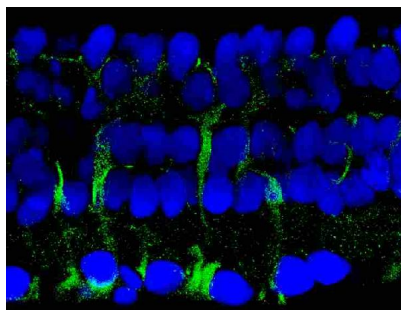
Product Name	Anti-Phospho-14-3-3 Protein (Ser58) YWHAB Antibody
Reactive Species	Human, Mouse, Rat
Description	Boster Bio Anti-Phospho-14-3-3 Protein (Ser58) YWHAB Antibody (Catalog # P02431). Tested in WB, IHC applications. This antibody reacts with Human, Mouse, Rat.
Application	IHC, WB
Clonality	Polyclonal 608
Formulation	10 mM HEPES (pH 7.5), 150 mM NaCl, 100 µg per ml BSA and 50% glycerol.
Storage Instructions	Storage at -20°C is recommended, as aliquots may be taken without freeze/thawing due to presence of 50% glycerol. Stable for at least 1 year at -20°C. After date of receipt, stable for at least 1 year at -20°C.
Host	Rabbit
Uniprot ID	P35213

Technical Details

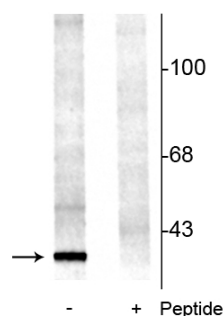
Immunogen	Synthetic phosphopeptide corresponding to amino acid residues surrounding Ser58 of rat 14-3-3, conjugated to keyhole limpet hemocyanin (KLH). Immunogen species is Rat.
Predicted Reactive Species	Bovine, Canine, Chicken, Primate, Sheep, Xenopus, Zebrafish
Cross Reactivity	No cross reactivity with other proteins.
Isotype	IgG
Form	Liquid

Concentration	0.5-1mg/ml, actual concentration vary by lot. Use suggested dilution ratio to decide dilution procedure.
Purification	Prepared from pooled rabbit serum by affinity purification via sequential chromatography on phospho and non-phosphopeptide affinity columns.
Suggested Dilutions	<p>Dilute the sample so that the expected range of concentrations fall within the detection range of this kit.</p> <p>If the expected range of concentration is unknown, a pilot test should be conducted to decide the optimal dilution ratio for your samples.</p> <p>Some PubMed article(s) citing the expression level of this target are as follows:</p> <p>Boster Bio's internal QC testing used:</p> <p>WB: 1:1000</p> <p>IHC: 1:100-1:500</p>

Anti-Phospho-14-3-3 Protein (Ser58) YWHAB Antibody (P02431) Images



Immunostaining of salamander retina showing labeling of 14-3-3 protein when phosphorylated at Ser⁵⁸ in Muller glial cells in green and DNA in blue.



Western blot of rat brainstem lysate showing specific immunolabeling of the ~29 kDa 14-3-3 protein phosphorylated at Ser⁵⁸ (-). The immunolabeling is blocked by the phosphopeptide used as the antigen (+) but not by the corresponding non-phosphopeptide (not shown).

Submit a product review to Biocompare.com

Submit a review of this product to Biocompare.com to receive a \$20 Amazon.com giftcard! Your reviews help your fellow scientists make the right decisions. Thank you for your contribution.



Anti-Phospho-14-3-3 Protein (Ser58) YWHAB Antibody