

Anti-Phospho CaMK1-alpha (Thr177) Antibody

Catalog Number: P02576

Overview

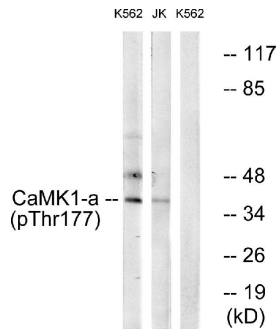
| | |
|----------------------|---|
| Product Name | Anti-Phospho CaMK1-alpha (Thr177) Antibody |
| Reactive Species | Human, Mouse, Rat |
| Description | Boster Bio Anti-Phospho CaMK1-alpha (Thr177) Antibody (Catalog# P02576). Tested in WB, IHC-P, IF, ICC, ELISA applications. This antibody reacts with Human, Mouse, Rat. |
| Application | ELISA, IF, IHC-P, ICC, WB |
| Clonality | Polyclonal CA-20 |
| Formulation | PBS containing 50% glycerol, 0.5% BSA and 0.02% sodium azide. |
| Storage Instructions | Store at -20°C for one year. For short-term storage and frequent use, store at 4°C for up to one month. Avoid repeated freeze-thaw cycles. |
| Host | Rabbit |
| Uniprot ID | Q14012 |

Technical Details

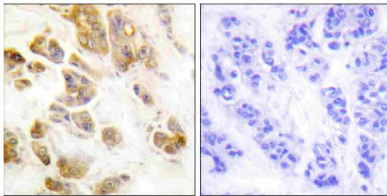
| | |
|----------------------------|--|
| Immunogen | A peptide derived from human CaMK1-alpha around the phosphorylation site of Thr177. Immunogen sequence location: 143-192 |
| Predicted Reactive Species | Human |
| Isotype | Rabbit IgG |
| Form | Liquid |
| Concentration | 0.5-1mg/ml, actual concentration vary by lot. Use suggested dilution ratio to decide dilution procedure. |
| Purification | The antibody was purified from rabbit antiserum by affinity-chromatography using phospho peptide. The antibody against non-phospho peptide was removed by chromatography using corresponding non-phospho peptide. |
| Suggested Dilutions | <p>Dilute the sample so that the expected range of concentrations fall within the detection range of this kit.</p> <p>If the expected range of concentration is unknown, a pilot test should be conducted to decide the optimal dilution ratio for your samples.</p> <p>Some PubMed article(s) citing the expression level of this target are as follows:</p> <p>Boster Bio's internal QC testing used:</p> <p>Western Blot, 1:500 - 1:2000</p> <p>Immunohistochemistry, 1:100 - 1:300</p> <p>Immunofluorescence, 1:200 - 1:1000</p> |

| | |
|--|--|
| | ELISA, 1:5000 Not yet tested in other applications. |
|--|--|

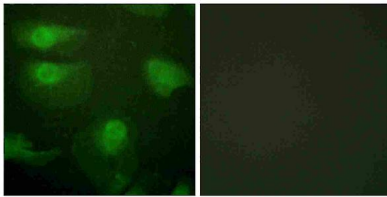
Anti-Phospho CaMK1-alpha (Thr177) Antibody (P02576) Images



Western blot analysis of lysates from K562 cells treated with insulin 0.01U/ml 15' and Jurkat cells treated with insulin 0.01U/ml 15', using CaMK1-α (Phospho-Thr177) Antibody. The lane on the right is blocked with the phospho peptide.



Immunohistochemistry analysis of paraffin-embedded human breast carcinoma, using CaMK1-α (Phospho-Thr177) Antibody. The picture on the right is blocked with the phospho peptide.



Immunofluorescence analysis of HeLa cells, using CaMK1-α (Phospho-Thr177) Antibody. The picture on the right is blocked with the phospho peptide.

Submit a product review to Biocompare.com

Submit a review of this product to Biocompare.com to receive a \$20 Amazon.com giftcard! Your reviews help your fellow scientists make the right decisions. Thank you for your contribution.



Anti-Phospho CaMK1-alpha (Thr177) Antibody