

Anti-Phospho-AMPA Receptor (GluR 1) (Ser845) GRIA1 Rabbit Monoclonal Antibody, Clone#RM296

Catalog Number: P02677-2

Overview

Product Name	Anti-Phospho-AMPA Receptor (GluR 1) (Ser845) GRIA1 Rabbit Monoclonal Antibody, Clone#RM296
Reactive Species	Human
Description	Boster Bio Anti-Phospho-AMPA Receptor (GluR 1) (Ser845) GRIA1 Rabbit Monoclonal Antibody, Clone#RM296 (Catalog # P02677-2). Tested in IHC, WB applications. This antibody reacts with Human.
Application	IHC, WB
Clonality	Monoclonal RM296
Formulation	50% Glycerol/PBS with 1% BSA and 0.09% sodium azide
Storage Instructions	Store at -20°C for one year. Avoid repeated freeze-thaw cycles.
Host	Rabbit
Uniprot ID	P42261

Technical Details

Immunogen	A phospho-peptide corresponding to human Phospho-Glutamate Receptor 1 (GluR1) (Ser845)
Predicted Reactive Species	Mouse, Rat
Cross Reactivity	Reacts to human GluR1 AMPA Receptor only when phosphorylated at Ser845. No cross-reactivity to GluR1 that is not phosphorylated at Ser845. May also react to mouse or rat Phospho-AMPA Receptor (GluR1) (Ser845) as predicted by immunogen homology.
Isotype	Rabbit IgG
Form	Liquid
Concentration	0.5-1mg/ml, actual concentration vary by lot. Use suggested dilution ratio to decide dilution procedure.
Purification	Protein A affinity purified from an animal origin-free culture supernatant
Suggested Dilutions	Dilute the sample so that the expected range of concentrations fall within the detection range of this kit. If the expected range of concentration is unknown, a pilot test should be conducted to decide the optimal dilution ratio for your samples. Some PubMed article(s) citing the expression level of this target are as follows:

Boster Bio's internal QC testing used:
Immunohistochemistry (IHC): 1:500-1:1000 dilution
WB: 1:1000-1:2000 dilution.

Anti-Phospho-AMPA Receptor (GluR 1) (Ser845) GRIA1 Rabbit Monoclonal Antibody, Clone#RM296 (P02677-2) Images

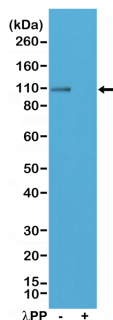


Figure 1. Western Blotting result
Western Blot of mouse brain tissue lysate, non-treated (-) or dephosphorylated (+) with Lambda Protein Phosphatase (PP), using Anti-Phospho-AMPA Receptor (GluR 1) (Ser845) rabbit monoclonal antibody (clone RM296) at a 1:200 dilution.

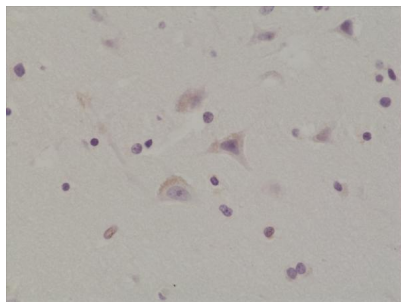


Figure 2. IHC result
Immunohistochemical staining of formalin fixed and paraffin embedded human brain tissue section using Anti-Phospho-AMPA Receptor (GluR 1) (Ser845) rabbit monoclonal antibody (clone RM296) at a 1:200 dilution.

Submit a product review to Biocompare.com

Submit a review of this product to Biocompare.com to receive a \$20 Amazon.com giftcard! Your reviews help your fellow scientists make the right decisions. Thank you for your contribution.



Anti-Phospho-AMPA Receptor (GluR 1) (Ser845) GRIA1 Rabbit Monoclonal Antibody, Clone#RM296