

Anti-Phospho-EphB1/2 (Tyr594/604) Antibody

Catalog Number: P02811

About EPHB1

Responds to activation by environmental stress and pro-inflammatory cytokines by phosphorylating a number of transcription factors, primarily components of AP-1 such as c-Jun and ATF2 and thus regulates AP-1 transcriptional activity. In T-cells, JNK1 and JNK2 are required for polarized differentiation of T-helper cells into Th1 cells.

Ferrer, et al. (2003) Neuropathology & Applied Neurobiology 29: 23

Zhonghong Guan, et al. (1999) J Biol Chem, Vol. 274: 36200-36206

D.Margriet Ouwers1, et al. (2002)The EMBO Journal 21: 3782

Overview

Product Name	Anti-Phospho-EphB1/2 (Tyr594/604) Antibody
Reactive Species	Human, Mouse, Rat
Description	Boster Bio Anti-Phospho-EphB1/2 (Tyr594/604) Antibody (Catalog # P02811). Tested in WB, IF, ELISA applications. This antibody reacts with Human, Mouse, Rat.
Application	ELISA, IF, WB
Clonality	Polyclonal
Formulation	Liquid in PBS containing 50% glycerol, 0.5% BSA and 0.02% sodium azide.
Storage Instructions	Store at -20°C for one year. For short term storage and frequent use, store at 4°C for up to one month. Avoid repeated freeze-thaw cycles.
Host	Rabbit
Uniprot ID	P54762

Technical Details

Immunogen	Synthesized peptide derived from human EphB1/2 around the phosphorylation site of Y594/604.
Predicted Reactive Species	Bovine, Chicken, Xenopus Laevis, Xenopus Tropicalis, Zebrafish
Form	Liquid
Concentration	1 mg/ml
Purification	The antibody was affinity-purified from rabbit antiserum by affinity-chromatography using epitope-specific immunogen.
Suggested Dilutions	Dilute the sample so that the expected range of concentrations fall within the detection range of this

kit.

If the expected range of concentration is unknown, a pilot test should be conducted to decide the optimal dilution ratio for your samples.

Some PubMed article(s) citing the expression level of this target are as follows:

Boster Bio's internal QC testing used:

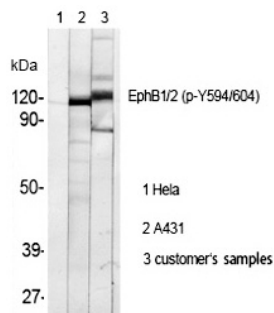
Western blotting: 1/500 - 1/2000

Immunofluorescence: 1/200 - 1/1000

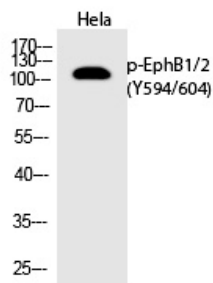
ELISA: 1/5000

Not yet tested in other applications.

Anti-Phospho-EphB1/2 (Tyr594/604) Antibody (P02811) Images



Western Blot analysis of HELA A431 cells using Phospho-EphB1/2 (Y594/604) Polyclonal antibody



Western Blot analysis of Hela cells using Phospho-EphB1/2 (Y594/604) Polyclonal antibody

Submit a product review to Biocompare.com

Submit a review of this product to Biocompare.com to receive a \$20 Amazon.com giftcard! Your reviews help your fellow scientists make the right decisions. Thank you for your contribution.



Anti-Phospho-EphB1/2 (Tyr594/604) Antibody