

Anti-Phospho-PAK1/2/3 (S144+S141+S139) PAK3 Rabbit Monoclonal Antibody

Catalog Number: P03124

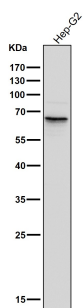
Overview

Product Name	Anti-Phospho-PAK1/2/3 (S144+S141+S139) PAK3 Rabbit Monoclonal Antibody
Reactive Species	Human, Mouse, Rat
Description	Boster Bio Anti-Phospho-PAK1/2/3 (S144+S141+S139) PAK3 Rabbit Monoclonal Antibody catalog # P03124. Tested in WB, IHC, ICC/IF, IP, Flow Cytometry applications. This antibody reacts with Human, Mouse, Rat.
Application	Flow Cytometry, IP, IF, IHC, ICC, WB
Clonality	Monoclonal CFF-16
Formulation	Rabbit IgG in phosphate buffered saline, pH 7.4, 150mM NaCl, 0.02% sodium azide and 50% glycerol, 0.4-0.5mg/ml BSA.
Storage Instructions	Store at -20°C for one year. For short term storage and frequent use, store at 4°C for up to one month. Avoid repeated freeze-thaw cycles.
Host	Rabbit
Uniprot ID	Q13153/Q13177/O75914

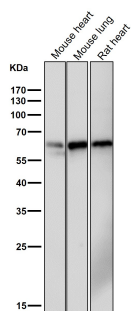
Technical Details

Immunogen	A synthesized peptide derived from human Phospho-PAK1/2/3 (S144+S141+S139)
Isotype	Rabbit IgG
Form	Liquid
Concentration	Actual concentration vary by lot. Use suggested dilution ratio to decide dilution procedure.
Purification	Affinity-chromatography
Suggested Dilutions	<p>Dilute the sample so that the expected range of concentrations fall within the detection range of this kit.</p> <p>If the expected range of concentration is unknown, a pilot test should be conducted to decide the optimal dilution ratio for your samples.</p> <p>Some PubMed article(s) citing the expression level of this target are as follows:</p> <p>Boster Bio's internal QC testing used:</p> <p>WB 1:1000-1:10000</p> <p>IHC 1:50-1:200</p> <p>ICC/IF 1:50-1:200</p> <p>IP 1:50</p> <p>FC 1:50</p>

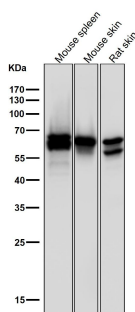
Anti-Phospho-PAK1/2/3 (S144+S141+S139) PAK3 Rabbit Monoclonal Antibody (P03124) Images



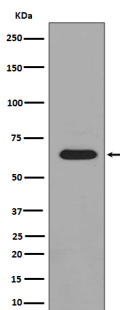
All lanes use the Antibody at 1:3K dilution for 1 hour at room temperature.



All lanes use the Antibody at 1:3K dilution for 1 hour at room temperature.

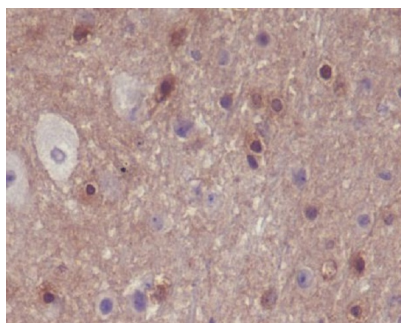
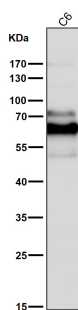


All lanes use the Antibody at 1:3K dilution for 1 hour at room temperature.



Western blot analysis of Phospho-PAK1/2/3 expression in HeLa Cell lysate treated with lambda phosphatase.

All lanes use the Antibody at 1:3K dilution for 1 hour at room temperature.



Immunohistochemical analysis of paraffin-embedded mouse brain, using Phospho-PAK1/2/3 (S144+S141+S139) Antibody.

Submit a product review to Biocompare.com

Submit a review of this product to Biocompare.com to receive a \$20 Amazon.com giftcard! Your reviews help your fellow scientists make the right decisions. Thank you for your contribution.



Anti-Phospho-PAK1/2/3 (S144+S141+S139) PAK3 Rabbit Monoclonal Antibody