

Anti-Phospho-GSK3 (alpha + beta) (Y216 + Y279) GSK3A Rabbit Monoclonal Antibody

Catalog Number: P03152-1

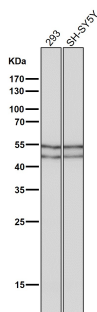
Overview

| | |
|----------------------|---|
| Product Name | Anti-Phospho-GSK3 (alpha + beta) (Y216 + Y279) GSK3A Rabbit Monoclonal Antibody |
| Reactive Species | Human, Mouse, Rat |
| Description | Boster Bio Anti-Phospho-GSK3 (alpha + beta) (Y216 + Y279) GSK3A Rabbit Monoclonal Antibody catalog # P03152-1. Tested in WB, IHC, ICC/IF, IP applications. This antibody reacts with Human, Mouse, Rat. |
| Application | IP, IF, IHC, ICC, WB |
| Clonality | Monoclonal IFB-7 |
| Formulation | Rabbit IgG in phosphate buffered saline, pH 7.4, 150mM NaCl, 0.02% sodium azide and 50% glycerol, 0.4-0.5mg/ml BSA. |
| Storage Instructions | Store at -20°C for one year. For short term storage and frequent use, store at 4°C for up to one month. Avoid repeated freeze-thaw cycles. |
| Host | Rabbit |
| Uniprot ID | P49840 |

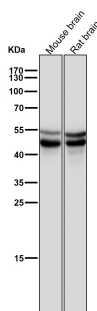
Technical Details

| | |
|---------------------|--|
| Immunogen | A synthesized peptide derived from human Phospho-GSK3 (alpha + beta) (Y216 + Y279) |
| Isotype | Rabbit IgG |
| Form | Liquid |
| Concentration | Actual concentration vary by lot. Use suggested dilution ratio to decide dilution procedure. |
| Purification | Affinity-chromatography |
| Suggested Dilutions | <p>Dilute the sample so that the expected range of concentrations fall within the detection range of this kit.</p> <p>If the expected range of concentration is unknown, a pilot test should be conducted to decide the optimal dilution ratio for your samples.</p> <p>Some PubMed article(s) citing the expression level of this target are as follows:</p> <p>Boster Bio's internal QC testing used:</p> <p>WB 1:500-1:2000</p> <p>IHC 1:50-1:200</p> <p>ICC/IF 1:50-1:200</p> <p>IP 1:50</p> |

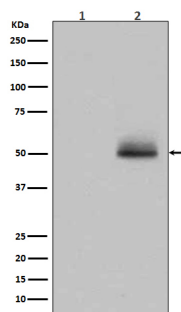
Anti-Phospho-GSK3 (alpha + beta) (Y216 + Y279) GSK3A Rabbit Monoclonal Antibody (P03152-1) Images



All lanes use the Antibody at 1:1K dilution for 1 hour at room temperature.



All lanes use the Antibody at 1:1K dilution for 1 hour at room temperature.



Western blot analysis of GSK3 alpha/ beta phosphorylation expression in 293 cell lysate treated with AP.

2 Publications Citing This Product

1. PubMed ID: 33069797, Shi R,Liu L,Wang F,He Y,Niu Y,Wang C,Zhang X,Zhang X,Zhang H,Chen M,Wang Y.Downregulation of cytokeratin 18 induces cellular partial EMT and stemness through increasing EpCAM expression in breast cancer.Cell Signal.2020 Dec;76:109810.doi:10.1016/j.cellsig

2. PubMed ID: 29137317, Mcl-1 stabilization confers resistance to taxol in human gastric cancer

Visit [bosterbio.com/anti-phospho-gsk3-alpha-beta-y216-y279-rabbit-monoclonal-antibody-p03152-1-boster.html](https://www.bosterbio.com/anti-phospho-gsk3-alpha-beta-y216-y279-rabbit-monoclonal-antibody-p03152-1-boster.html) to see all 2 publications.

Submit a product review to Biocompare.com

Submit a review of this product to Biocompare.com to receive a \$20 Amazon.com giftcard! Your reviews help your fellow scientists make the right decisions. Thank you for your contribution.



Anti-Phospho-GSK3 (alpha + beta) (Y216 + Y279) GSK3A Rabbit Monoclonal Antibody