

## Anti-Phospho-eEF1A2 (Ser358) Antibody

Catalog Number: P03304

### About eEF1A2

Eukaryotic Elongation Factor eEF1A exists in two variant forms, eEF1A1 and eEF1A2. While eEF1A1 is almost ubiquitously expressed in humans, eEF1A2 is predominantly found in heart, brain, and skeletal muscle (Knudsen et al., 1993). Expression of eEF1A2 may have a role in ovarian cancer, as its expression is drastically increased in human ovarian tumors (Anand et al., 2002). Due to differences in structural models between the two isoforms, eEF1A1 and eEF1A2 likely have variant-specific phosphorylation sites (Soares et al., 2009). Ribosome-associated JNK phosphorylates Ser-358 on eEF1A2 to promote degradation of newly synthesized polypeptides by the proteasome (Gandin et al., 2013).

### Overview

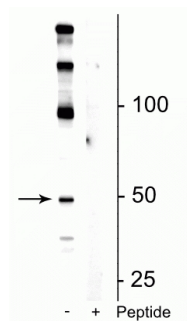
Product Name	Anti-Phospho-eEF1A2 (Ser358) Antibody
Reactive Species	Human, Mouse
Description	Boster Bio Anti-Phospho-eEF1A2 (Ser358) Antibody (Catalog # P03304). Tested in WB applications. This antibody reacts with Human, Mouse.
Application	WB
Clonality	Polyclonal 608
Formulation	10 mM HEPES (pH 7.5), 150 mM NaCl, 100 µg per ml BSA and 50% glycerol.
Storage Instructions	Storage at -20°C is recommended, as aliquots may be taken without freeze/thawing due to presence of 50% glycerol. Stable for at least 1 year at -20°C. After date of receipt, stable for at least 1 year at -20°C.
Host	Rabbit
Uniprot ID	Q05639

### Technical Details

Immunogen	Synthetic phospho-peptide corresponding to amino acid residues surrounding Ser358 of human eEF1A2, conjugated to keyhole limpet hemocyanin (KLH). Immunogen species is Human.
Predicted Reactive Species	Chicken, Primate, Rat, Sheep, Xenopus
Cross Reactivity	No cross reactivity with other proteins.
Isotype	IgG
Form	Liquid
Concentration	0.5-1mg/ml, actual concentration vary by lot. Use suggested dilution ratio to decide dilution procedure.

Purification	Prepared from pooled rabbit serum by affinity purification via sequential chromatography on phospho and non-phosphopeptide affinity columns.
Suggested Dilutions	<p>Dilute the sample so that the expected range of concentrations fall within the detection range of this kit.</p> <p>If the expected range of concentration is unknown, a pilot test should be conducted to decide the optimal dilution ratio for your samples.</p> <p>Some PubMed article(s) citing the expression level of this target are as follows:</p> <p>Boster Bio's internal QC testing used:</p> <p>WB: 1:1000</p>

## Anti-Phospho-eEF1A2 (Ser358) Antibody (P03304) Images



Western blot of mouse hippocampal lysate showing specific immunolabeling of the ~50 kDa eEF1A2 protein phosphorylated at Ser<sup>358</sup> in the first lane (-). Phosphospecificity is shown in the second lane (+) where immunolabeling is completely eliminated by lysate treatment with lambda phosphatase (gamma-Ptase, 800 units/1mg protein for 30 min).

### Submit a product review to Biocompare.com

Submit a review of this product to Biocompare.com to receive a \$20 Amazon.com giftcard! Your reviews help your fellow scientists make the right decisions. Thank you for your contribution.



Anti-Phospho-eEF1A2 (Ser358) Antibody