

Anti-Phospho Ras-GRF1 (Ser916) Antibody

Catalog Number: P03338

Overview

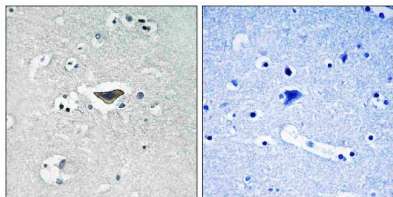
Product Name	Anti-Phospho Ras-GRF1 (Ser916) Antibody
Reactive Species	Mouse, Rat
Description	Boster Bio Anti-Phospho Ras-GRF1 (Ser916) Antibody (Catalog# P03338). Tested in WB, IHC-P, IF, ICC, ELISA applications. This antibody reacts with Mouse, Rat.
Application	ELISA, IF, IHC-P, ICC, WB
Clonality	Polyclonal CA-20
Formulation	PBS containing 50% glycerol, 0.5% BSA and 0.02% sodium azide.
Storage Instructions	Store at -20°C for one year. For short-term storage and frequent use, store at 4°C for up to one month. Avoid repeated freeze-thaw cycles.
Host	Rabbit
Uniprot ID	P27671

Technical Details

Immunogen	A peptide derived from mouse Ras-GRF1 around the phosphorylation site of Ser916. Immunogen sequence location: 882-931
Predicted Reactive Species	Human
Isotype	Rabbit IgG
Form	Liquid
Concentration	0.5-1mg/ml, actual concentration vary by lot. Use suggested dilution ratio to decide dilution procedure.
Purification	The antibody was purified from rabbit antiserum by affinity-chromatography using phospho peptide. The antibody against non-phospho peptide was removed by chromatography using corresponding non-phospho peptide.
Suggested Dilutions	<p>Dilute the sample so that the expected range of concentrations fall within the detection range of this kit.</p> <p>If the expected range of concentration is unknown, a pilot test should be conducted to decide the optimal dilution ratio for your samples.</p> <p>Some PubMed article(s) citing the expression level of this target are as follows:</p> <p>Boster Bio's internal QC testing used:</p> <p>Immunohistochemistry, 1:100 - 1:300</p> <p>Immunofluorescence, 1:200 - 1:1000</p> <p>ELISA, 1:20000</p>

	Not yet tested in other applications.
--	---------------------------------------

Anti-Phospho Ras-GRF1 (Ser916) Antibody (P03338) Images



Immunohistochemistry analysis of paraffin-embedded human brain, using Ras-GRF1 (Phospho-Ser916) Antibody. The picture on the right is blocked with the phospho peptide.

Submit a product review to Biocompare.com

Submit a review of this product to Biocompare.com to receive a \$20 Amazon.com giftcard! Your reviews help your fellow scientists make the right decisions. Thank you for your contribution.



Anti-Phospho Ras-GRF1 (Ser916) Antibody