

## Anti-Phospho-DARPP 32 (Thr34) PPP1R1B Antibody

Catalog Number: P03424-1

### About PPP1R1B

DARPP-32 is a dopamine (DA) and cAMP-regulated ~32k phosphoprotein that is associated with dopaminergic neurons (Fienberg et al., 1998). The protein inhibits protein phosphatase I when it is phosphorylated on Thr-34. In contrast, when DARPP-32 is phosphorylated on Thr-75 the protein acts as an inhibitor of PKA (Bibb et al., 1999). Phosphorylation of DARPP-32 is thought to play a critical role in the regulation of dopaminergic neurotransmission. In addition, the activity of DARPP-32 is also thought to play important roles in the actions of alcohol, caffeine and Prozac® (Malve et al., 2002; Lindskog et al., 2002; Svenningsson et al., 2002).

### Overview

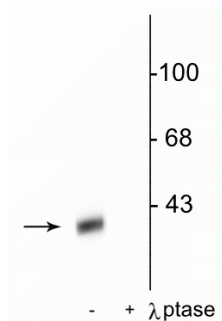
Product Name	Anti-Phospho-DARPP 32 (Thr34) PPP1R1B Antibody
Reactive Species	Mouse, Rat
Description	Boster Bio Anti-Phospho-DARPP 32 (Thr34) PPP1R1B Antibody (Catalog # P03424-1). Tested in WB applications. This antibody reacts with Mouse, Rat.
Application	WB
Clonality	Polyclonal 608
Formulation	10 mM HEPES (pH 7.5), 150 mM NaCl, 100 µg per ml BSA and 50% glycerol.
Storage Instructions	Storage at -20°C is recommended, as aliquots may be taken without freeze/thawing due to presence of 50% glycerol. Stable for at least 1 year at -20°C. After date of receipt, stable for at least 1 year at -20°C.
Host	Rabbit
Uniprot ID	Q6J4I0

### Technical Details

Immunogen	Synthetic phospho-peptide corresponding to amino acid residues surrounding Thr34 of rat DARPP-32, conjugated to keyhole limpet hemocyanin (KLH). Immunogen species is Rat.
Predicted Reactive Species	Bovine, Canine, Chicken, Human, Primate
Cross Reactivity	No cross reactivity with other proteins.
Isotype	IgG
Form	Liquid
Concentration	0.5-1mg/ml, actual concentration vary by lot. Use suggested dilution ratio to decide dilution procedure.

Purification	Prepared from pooled rabbit serum by affinity purification via sequential chromatography on phospho and non-phosphopeptide affinity columns.
Suggested Dilutions	<p>Dilute the sample so that the expected range of concentrations fall within the detection range of this kit.</p> <p>If the expected range of concentration is unknown, a pilot test should be conducted to decide the optimal dilution ratio for your samples.</p> <p>Some PubMed article(s) citing the expression level of this target are as follows:</p> <p>Boster Bio's internal QC testing used:</p> <p>WB: 1:1000</p>

## Anti-Phospho-DARPP 32 (Thr34) PPP1R1B Antibody (P03424-1) Images



Western blot of rat striatal lysate showing specific immunolabeling of the ~32 kDa DARPP-32 phosphorylated at Thr<sup>34</sup> in the first lane (-). Phosphospecificity is shown in the second lane (+) where immunolabeling is completely eliminated by blot treatment with lambda phosphatase (gamma-Ptase, 1200 units for 30 min).

### Submit a product review to Biocompare.com

Submit a review of this product to Biocompare.com to receive a \$20 Amazon.com giftcard! Your reviews help your fellow scientists make the right decisions. Thank you for your contribution.



Anti-Phospho-DARPP 32 (Thr34) PPP1R1B Antibody