

Anti-Phospho-GABAB R2 (Ser783) GABBR2 Antibody

Catalog Number: P03830

About GABBR2

Gamma-aminobutyric acid (GABA) is the primary inhibitory neurotransmitter in the central nervous system. There are two major classes of GABA receptors: the GABA-A and the GABA-B subtype of receptors. GABA-B receptors are heterodimeric G protein-coupled receptors that mediate slow synaptic inhibition in the central nervous system. It has recently been demonstrated that AMPK binds directly to GABA-B receptors and phosphorylates Ser-783 in the cytoplasmic tail of the R2 subunit and that Ser-783 plays a critical role in enhancing neuronal survival after ischemia as phosphorylation of Ser-783 is evident in many brain regions and is increased dramatically after ischemic injury to the brain (Kuramoto et al., 2007).

Overview

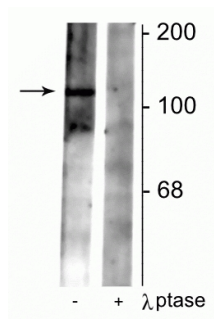
Product Name	Anti-Phospho-GABAB R2 (Ser783) GABBR2 Antibody
Reactive Species	Mouse, Rat
Description	Boster Bio Anti-Phospho-GABAB R2 (Ser783) GABBR2 Antibody (Catalog # P03830). Tested in WB, IHC, ICC applications. This antibody reacts with Mouse, Rat.
Application	IHC, ICC, WB
Clonality	Polyclonal 608
Formulation	10 mM HEPES (pH 7.5), 150 mM NaCl, 100 µg per ml BSA and 50% glycerol.
Storage Instructions	Storage at -20°C is recommended, as aliquots may be taken without freeze/thawing due to presence of 50% glycerol. Stable for at least 1 year at -20°C. After date of receipt, stable for at least 1 year at -20°C.
Host	Rabbit
Uniprot ID	O88871

Technical Details

Immunogen	Synthetic phospho-peptide corresponding to amino acid residues surrounding Ser783 of the R2 subunit of rat GABAB receptor, conjugated to keyhole limpet hemocyanin (KLH). Immunogen species is Rat.
Predicted Reactive Species	Bovine, Canine, Chicken, Human, Primate, Xenopus
Cross Reactivity	No cross reactivity with other proteins.
Isotype	IgG
Form	Liquid

Concentration	0.5-1mg/ml, actual concentration vary by lot. Use suggested dilution ratio to decide dilution procedure.
Purification	Prepared from pooled rabbit serum by affinity purification via sequential chromatography on phospho and non-phosphopeptide affinity columns.
Suggested Dilutions	<p>Dilute the sample so that the expected range of concentrations fall within the detection range of this kit.</p> <p>If the expected range of concentration is unknown, a pilot test should be conducted to decide the optimal dilution ratio for your samples.</p> <p>Some PubMed article(s) citing the expression level of this target are as follows:</p> <p>Boster Bio's internal QC testing used:</p> <p>WB: 1:1000 IHC: 1:500 ICC: 1:500</p>

Anti-Phospho-GABAB R2 (Ser783) GABBR2 Antibody (P03830) Images



Western blot of rat synaptic membrane lysate showing specific immunolabeling of the ~102 kDa GABA_B R2 protein phosphorylated at Ser⁷⁸³ in the first lane (-). Phosphospecificity is shown in the second lane (+) where immunolabeling is completely eliminated by blot treatment with lambda phosphatase (gamma-Ptase, 1200 units for 30 min).

Submit a product review to Biocompare.com

Submit a review of this product to Biocompare.com to receive a \$20 Amazon.com giftcard! Your reviews help your fellow scientists make the right decisions. Thank you for your contribution.



Anti-Phospho-GABAB R2 (Ser783) GABBR2 Antibody