

Anti-Phospho-Che-1 (AATF) (Ser477) Antibody

Catalog Number: P03945

About AATF

Che-1, also known as AATF (apoptosis-antagonizing transcription factor), is a RNA polymerase II-binding protein involved in regulating the transcription factor E2F and promoting cell cycle progression (Burgdorf et al., 2004). It has been suggested that Che-1 may act as a neuroprotective factor against Abeta-induced apoptosis by suppressing the production of reactive oxidative species (Xie et al., 2004). The checkpoint kinase Chk2 has been shown to phosphorylate Che-1 at Ser-477 contributing to the maintenance of the G2/M checkpoint induced by DNA damage (Bruno et al., 2006).

Overview

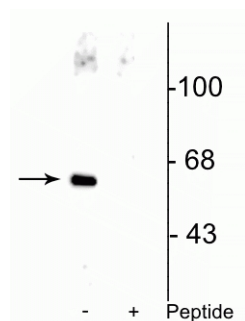
Product Name	Anti-Phospho-Che-1 (AATF) (Ser477) Antibody
Reactive Species	Human
Description	Boster Bio Anti-Phospho-Che-1 (AATF) (Ser477) Antibody (Catalog # P03945). Tested in WB applications. This antibody reacts with Human.
Application	WB
Clonality	Polyclonal 608
Formulation	10 mM HEPES (pH 7.5), 150 mM NaCl, 100 µg per ml BSA and 50% glycerol.
Storage Instructions	Storage at -20°C is recommended, as aliquots may be taken without freeze/thawing due to presence of 50% glycerol. Stable for at least 1 year at -20°C. After date of receipt, stable for at least 1 year at -20°C.
Host	Rabbit
Uniprot ID	Q9NY61

Technical Details

Immunogen	Synthetic phospho-peptide corresponding to amino acid residues surrounding Ser477 of human Che-1, conjugated to keyhole limpet hemocyanin (KLH). Immunogen species is Human.
Predicted Reactive Species	Bovine, Canine, Mouse, Primate, Rat, Sheep, Xenopus
Cross Reactivity	No cross reactivity with other proteins.
Isotype	IgG
Form	Liquid
Concentration	0.5-1mg/ml, actual concentration vary by lot. Use suggested dilution ratio to decide dilution procedure.

Purification	Prepared from pooled rabbit serum by affinity purification via sequential chromatography on phospho and non-phosphopeptide affinity columns.
Suggested Dilutions	<p>Dilute the sample so that the expected range of concentrations fall within the detection range of this kit.</p> <p>If the expected range of concentration is unknown, a pilot test should be conducted to decide the optimal dilution ratio for your samples.</p> <p>Some PubMed article(s) citing the expression level of this target are as follows:</p> <p>Boster Bio's internal QC testing used:</p> <p>WB: 1:1000</p>

Anti-Phospho-Che-1 (AATF) (Ser477) Antibody (P03945) Images



Submit a product review to Biocompare.com

Submit a review of this product to Biocompare.com to receive a \$20 Amazon.com giftcard! Your reviews help your fellow scientists make the right decisions. Thank you for your contribution.



Anti-Phospho-Che-1 (AATF) (Ser477) Antibody