

## Anti-Phospho-MEK5 (Ser311 Thr315) Antibody

Catalog Number: P03980

### About MAP2K5

MEK5 (also known as MKK5) is a dual specificity serine/threonine protein kinase belonging to the MAP kinase kinase family. MEK5 has been shown to specifically activate ERK5 (Zhou et al., 1995) whereas MEK5 itself is regulated by MEKK3 (Chao et al., 1999). An important link between MEK5 and metastatic prostate cancer has been demonstrated (Mehta et al., 2003). Dual phosphorylation of Ser-311 and Thr-315 have been implicated in cell proliferation (Cameron et al., 2004).

### Overview

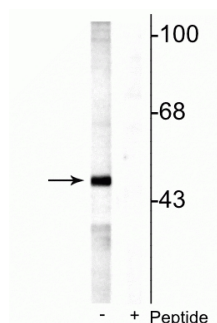
Product Name	Anti-Phospho-MEK5 (Ser311 Thr315) Antibody
Reactive Species	Rat
Description	Boster Bio Anti-Phospho-MEK5 (Ser311 Thr315) Antibody (Catalog # P03980). Tested in WB applications. This antibody reacts with Rat.
Application	WB
Clonality	Polyclonal 1B9
Formulation	10 mM HEPES (pH 7.5), 150 mM NaCl, 100 µg per ml BSA and 50% glycerol.
Storage Instructions	Storage at -20°C is recommended, as aliquots may be taken without freeze/thawing due to presence of 50% glycerol. Stable for at least 1 year at -20°C. After date of receipt, stable for at least 1 year at -20°C.
Host	Rabbit
Uniprot ID	Q62862

### Technical Details

Immunogen	Synthetic phospho-peptide corresponding to amino acid residues surrounding Ser311/Thr315 of rat MEK5, conjugated to keyhole limpet hemocyanin (KLH). Immunogen species is Rat.
Predicted Reactive Species	Bovine, Canine, Chicken, Human, Mouse, Primate, Xenopus, Zebrafish
Cross Reactivity	No cross reactivity with other proteins.
Isotype	IgG
Form	Liquid
Concentration	0.5-1mg/ml, actual concentration vary by lot. Use suggested dilution ratio to decide dilution procedure.
Purification	Prepared from pooled rabbit serum by affinity purification via sequential chromatography on

	phospho and non-phosphopeptide affinity columns.
Suggested Dilutions	<p>Dilute the sample so that the expected range of concentrations fall within the detection range of this kit.</p> <p>If the expected range of concentration is unknown, a pilot test should be conducted to decide the optimal dilution ratio for your samples.</p> <p>Some PubMed article(s) citing the expression level of this target are as follows:</p> <p>Boster Bio's internal QC testing used:</p> <p>WB: 1:1000</p>

## Anti-Phospho-MEK5 (Ser311 Thr315) Antibody (P03980) Images



Western blot of rat testes lysate showing specific labeling of the ~49 kDa MEK5 protein phosphorylated at Ser<sup>311</sup> Thr<sup>315</sup> in the first lane (-). Phosphospecificity is shown in the second lane (+) where immunolabeling is blocked by preadsorption of the phosphopeptide used as the antigen, but not by the corresponding non-phosphopeptide (not shown).

### Submit a product review to Biocompare.com

Submit a review of this product to Biocompare.com to receive a \$20 Amazon.com giftcard! Your reviews help your fellow scientists make the right decisions. Thank you for your contribution.



Anti-Phospho-MEK5 (Ser311 Thr315) Antibody