

Anti-Phospho-PKD2 (Ser876) PRKD2 Antibody

Catalog Number: P04056

About PRKD2

Responds to activation by environmental stress and pro-inflammatory cytokines by phosphorylating a number of transcription factors, primarily components of AP-1 such as c-Jun and ATF2 and thus regulates AP-1 transcriptional activity. In T-cells, JNK1 and JNK2 are required for polarized differentiation of T-helper cells into Th1 cells.

Ferrer, et al. (2003) Neuropathology & Applied Neurobiology 29: 23

Zhonghong Guan, et al. (1999) J Biol Chem, Vol. 274: 36200-36206

D.Margriet Ouwers1, et al. (2002)The EMBO Journal 21: 3782

Overview

Product Name	Anti-Phospho-PKD2 (Ser876) PRKD2 Antibody
Reactive Species	Human, Mouse, Rat
Description	Boster Bio Anti-Phospho-PKD2 (Ser876) PRKD2 Antibody (Catalog # P04056). Tested in WB, IHC, ELISA applications. This antibody reacts with Human, Mouse, Rat.
Application	ELISA, IHC, WB
Clonality	Polyclonal
Formulation	Liquid in PBS containing 50% glycerol, 0.5% BSA and 0.02% sodium azide.
Storage Instructions	Store at -20°C for one year. For short term storage and frequent use, store at 4°C for up to one month. Avoid repeated freeze-thaw cycles.
Host	Rabbit
Uniprot ID	Q9BZL6

Technical Details

Immunogen	Synthesized peptide derived from human PKD2 around the phosphorylation site of S876.
Predicted Reactive Species	Bovine, Chicken, Xenopus Laevis, Xenopus Tropicalis, Zebrafish
Form	Liquid
Concentration	1 mg/ml
Purification	The antibody was affinity-purified from rabbit antiserum by affinity-chromatography using epitope-specific immunogen.
Suggested Dilutions	Dilute the sample so that the expected range of concentrations fall within the detection range of this

kit.

If the expected range of concentration is unknown, a pilot test should be conducted to decide the optimal dilution ratio for your samples.

Some PubMed article(s) citing the expression level of this target are as follows:

Boster Bio's internal QC testing used:

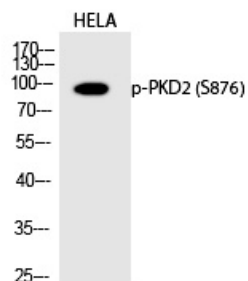
Western blotting: 1/500 - 1/2000

Immunohistochemistry: 1/100 - 1/300

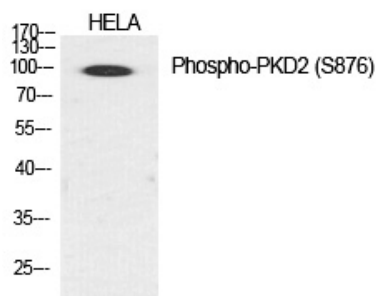
ELISA: 1/40000

Not yet tested in other applications.

Anti-Phospho-PKD2 (Ser876) PRKD2 Antibody (P04056) Images



Western Blot analysis of HELA cells using Phospho-PKD2 (S876) Polyclonal antibody



Western Blot analysis of HELA cells using Phospho-PKD2 (S876) Polyclonal antibody

Submit a product review to Biocompare.com

Submit a review of this product to Biocompare.com to receive a \$20 Amazon.com giftcard! Your reviews help your fellow scientists make the right decisions. Thank you for your contribution.



Anti-Phospho-PKD2 (Ser876) PRKD2 Antibody