

Anti-Phospho-Potassium Chloride Cotransporter 2 (KCC2) (Ser940) SLC12A5 Antibody

Catalog Number: P04629

About KCC2

KCC2 is widely thought to be expressed exclusively in neurons where it is responsible for maintaining low intracellular chloride concentration to drive hyperpolarizing post-synaptic responses to the inhibitory neurotransmitters GABA and glycine. Serine 940 on KCC2 has been shown to be phosphorylated by PKC and has further been demonstrated to be the major site for PKC-dependent phosphorylation for full length KCC2 molecules when expressed in HEK-293 cells as phosphorylation of Ser-940 increased the cell surface stability of KCC2 in this system by decreasing it's rate of internalization from the plasma membrane (Lee et al., 2007).

Overview

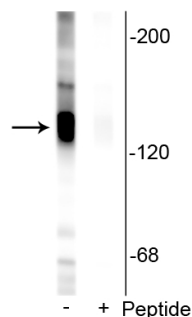
Product Name	Anti-Phospho-Potassium Chloride Cotransporter 2 (KCC2) (Ser940) SLC12A5 Antibody
Reactive Species	Mouse, Rat
Description	Boster Bio Anti-Phospho-Potassium Chloride Cotransporter 2 (KCC2) (Ser940) SLC12A5 Antibody (Catalog # P04629). Tested in WB, IP applications. This antibody reacts with Mouse, Rat.
Application	IP, WB
Clonality	Polyclonal 1B9
Formulation	10 mM HEPES (pH 7.5), 150 mM NaCl, 100 µg per ml BSA and 50% glycerol.
Storage Instructions	Storage at -20°C is recommended, as aliquots may be taken without freeze/thawing due to presence of 50% glycerol. Stable for at least 1 year at -20°C. After date of receipt, stable for at least 1 year at -20°C.
Host	Rabbit
Uniprot ID	Q63633

Technical Details

Immunogen	Synthetic phospho-peptide corresponding to amino acid residues surrounding Ser940 of rat KCC2, conjugated to keyhole limpet hemocyanin (KLH). Immunogen species is Rat.
Predicted Reactive Species	Bovine, Canine, Primate, Zebrafish
Cross Reactivity	No cross reactivity with other proteins.
Isotype	IgG
Form	Liquid
Concentration	0.5-1mg/ml, actual concentration vary by lot. Use suggested dilution ratio to decide dilution

	procedure.
Purification	Prepared from pooled rabbit serum by affinity purification via sequential chromatography on phospho and non-phosphopeptide affinity columns.
Suggested Dilutions	<p>Dilute the sample so that the expected range of concentrations fall within the detection range of this kit.</p> <p>If the expected range of concentration is unknown, a pilot test should be conducted to decide the optimal dilution ratio for your samples.</p> <p>Some PubMed article(s) citing the expression level of this target are as follows:</p> <p>Boster Bio's internal QC testing used:</p> <p>WB: 1:1000</p> <p>IP: 40ul of antibody per 1mg lysate</p>

Anti-Phospho-Potassium Chloride Cotransporter 2 (KCC2) (Ser940) SLC12A5 Antibody (P04629) Images



Western blot of rat hippocampal lysate showing specific labeling of the ~135 kDa KCC2 protein phosphorylated at Ser⁹⁴⁰ in the first lane (-). Immunolabeling is blocked by preadsorption with the phosphopeptide used as antigen in the second lane (+), but not by the corresponding non-phosphopeptide (not shown).

Submit a product review to Biocompare.com

Submit a review of this product to Biocompare.com to receive a \$20 Amazon.com giftcard! Your reviews help your fellow scientists make the right decisions. Thank you for your contribution.



Anti-Phospho-Potassium Chloride Cotransporter 2 (KCC2) (Ser940) SLC12A5 Antibody