

Anti-Phospho-mGluR7 (Ser862) Antibody

Catalog Number: P05202

About GRM7

Metabotropic glutamate receptors (mGluRs) are key receptors in the modulation of excitatory synaptic transmission in the central nervous system. They are implicated in many forms of neural plasticity as well as learning and memory and drug abuse (Bhattacharya et al., 2004; Francesconi et al., 2004; Wilson and Nicoll, 2001). The mGluRs are divided into three groups based on sequence identity and pharmacological properties: group I (mGluR1 and mGluR5) are localized in the perisynaptic region of the postsynaptic membrane, whereas group II (mGluR2 and mGluR3) and group III (mGluR4,6,7 and 8) are localized predominantly at presynaptic terminals. PKC phosphorylation of Ser-862 on mGluR7 has been shown to be critical for stabilizing receptor surface expression and promoting binding to the synaptic PDZ-domain-containing protein PICK1 (Suh et al., 2008).

Overview

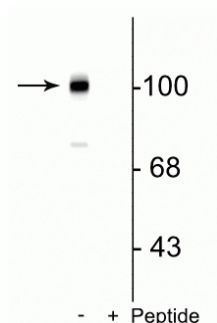
Product Name	Anti-Phospho-mGluR7 (Ser862) Antibody
Reactive Species	Mouse, Rat
Description	Boster Bio Anti-Phospho-mGluR7 (Ser862) Antibody (Catalog # P05202). Tested in WB applications. This antibody reacts with Mouse, Rat.
Application	WB
Clonality	Polyclonal 1B9
Formulation	10 mM HEPES (pH 7.5), 150 mM NaCl, 100 µg per ml BSA and 50% glycerol.
Storage Instructions	Storage at -20°C is recommended, as aliquots may be taken without freeze/thawing due to presence of 50% glycerol. Stable for at least 1 year at -20°C. After date of receipt, stable for at least 1 year at -20°C.
Host	Rabbit
Uniprot ID	P35400

Technical Details

Immunogen	Synthetic phospho-peptide corresponding to amino acid residues surrounding Ser862 of rat mGluR7, conjugated to keyhole limpet hemocyanin (KLH). Immunogen species is Rat.
Predicted Reactive Species	Bovine, Canine, Human, Primate, Zebrafish
Cross Reactivity	No cross reactivity with other proteins.
Isotype	IgG
Form	Liquid
Concentration	0.5-1mg/ml, actual concentration vary by lot. Use suggested dilution ratio to decide dilution

	procedure.
Purification	Prepared from rabbit serum by affinity purification via sequential chromatography on phospho and non-phosphopeptide affinity columns.
Suggested Dilutions	<p>Dilute the sample so that the expected range of concentrations fall within the detection range of this kit.</p> <p>If the expected range of concentration is unknown, a pilot test should be conducted to decide the optimal dilution ratio for your samples.</p> <p>Some PubMed article(s) citing the expression level of this target are as follows:</p> <p>Boster Bio's internal QC testing used:</p> <p>WB: 1:1000</p>

Anti-Phospho-mGluR7 (Ser862) Antibody (P05202) Images



Western blot of mouse brain lysate showing the specific immunolabeling of the ~102 kDa mGluR7 protein phosphorylated at Ser⁸⁶² in the first lane (-). Phosphospecificity is shown in the second lane (+) where immunolabeling is blocked by preadsorption of the phosphopeptide used as the antigen, but not by the corresponding non-phosphopeptide (not shown).

Submit a product review to Biocompare.com

Submit a review of this product to Biocompare.com to receive a \$20 Amazon.com giftcard! Your reviews help your fellow scientists make the right decisions. Thank you for your contribution.



Anti-Phospho-mGluR7 (Ser862) Antibody