

# Anti-Phospho-Protein Tyrosine Phosphatase H1 (PTPH1)(Ser459) Antibody

Catalog Number: P06227

## About PTPH1

Protein-tyrosine Phosphatase H1 (PTPH1) has recently been identified as a specific p38gamma MAPK phosphatase which is mediated through PDZ interaction (Hou et al., 2010). Ras has been demonstrated to increase both p38gamma and PTPH1 protein expression, and there is a coupling of increased p38gamma and PTPH1 protein expression in primary colon cancer tissues (Hou et al., 2010). Phosphorylation of PTPH1 at Ser-459 leads to PTPH1 stabilization, which plays an important role in Ras oncogenesis and stress response (Hou et al., 2012). Additionally, phosphorylation of PTPH1 Ser-459 reveals a novel mechanism by which MAPK signals through PTPH1 to regulate cellular response (Hou et al., 2012).

## Overview

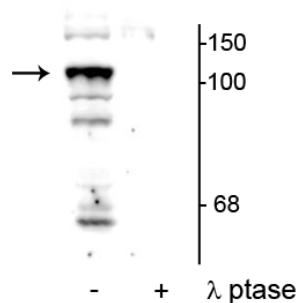
Product Name	Anti-Phospho-Protein Tyrosine Phosphatase H1 (PTPH1)(Ser459) Antibody
Reactive Species	Human, Mouse
Description	Boster Bio Anti-Phospho-Protein Tyrosine Phosphatase H1 (PTPH1)(Ser459) Antibody (Catalog # P06227). Tested in WB applications. This antibody reacts with Human, Mouse.
Application	WB
Clonality	Polyclonal 1B9
Formulation	10 mM HEPES (pH 7.5), 150 mM NaCl, 100 µg per ml BSA and 50% glycerol.
Storage Instructions	Storage at -20°C is recommended, as aliquots may be taken without freeze/thawing due to presence of 50% glycerol. Stable for at least 1 year at -20°C. After date of receipt, stable for at least 1 year at -20°C.
Host	Rabbit
Uniprot ID	P26045

## Technical Details

Immunogen	Synthetic phospho-peptide corresponding to amino acid residues surrounding Ser459 of human PTPH1, conjugated to keyhole limpet hemocyanin (KLH). Immunogen species is Human.
Predicted Reactive Species	Bovine, Canine, Primate, Sheep
Cross Reactivity	No cross reactivity with other proteins.
Isotype	IgG
Form	Liquid
Concentration	0.5-1mg/ml, actual concentration vary by lot. Use suggested dilution ratio to decide dilution

	procedure.
Purification	Prepared from pooled rabbit serum by affinity purification via sequential chromatography on phospho and non-phosphopeptide affinity columns.
Suggested Dilutions	<p>Dilute the sample so that the expected range of concentrations fall within the detection range of this kit.</p> <p>If the expected range of concentration is unknown, a pilot test should be conducted to decide the optimal dilution ratio for your samples.</p> <p>Some PubMed article(s) citing the expression level of this target are as follows:</p> <p>Boster Bio's internal QC testing used:</p> <p>WB: 1:1000</p>

## Anti-Phospho-Protein Tyrosine Phosphatase H1 (PTPH1)(Ser459) Antibody (P06227) Images



Western blot of mouse testicular lysate showing specific immunolabeling of the ~104 kDa PTPH1 phosphorylated at Ser<sup>459</sup> in the first lane (-). Phosphospecificity is shown in the second lane (+) where the immunolabeling is completely eliminated by lysate treatment with lambda phosphatase (gamma-Ptase , 400 units/100ul lysate for 30 minutes, RT).

### Submit a product review to Biocompare.com

Submit a review of this product to Biocompare.com to receive a \$20 Amazon.com giftcard! Your reviews help your fellow scientists make the right decisions. Thank you for your contribution.



Anti-Phospho-Protein Tyrosine Phosphatase H1 (PTPH1)(Ser459) Antibody