

## Anti-Phospho-GABAB R1 (Ser923) Antibody

Catalog Number: P07297

### About GABBR1

Gamma-aminobutyric acid (GABA) is the primary inhibitory neurotransmitter in the central nervous system. There are two major classes of GABA receptors: the GABA-A and the GABA-B subtype of receptors. GABA-B receptors are heterodimeric G protein-coupled receptors that mediate slow synaptic inhibition in the central nervous system. Phosphorylation enhances GABA-B receptor effector coupling (Couve et al., 2004).

Phosphorylation of Ser-923 is thought to be important in the regulation of GABA-B receptor function.

### Overview

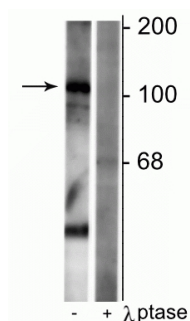
Product Name	Anti-Phospho-GABAB R1 (Ser923) Antibody
Reactive Species	Mouse, Rat
Description	Boster Bio Anti-Phospho-GABAB R1 (Ser923) Antibody (Catalog # P07297). Tested in WB applications. This antibody reacts with Mouse, Rat.
Application	WB
Clonality	Polyclonal 1B9
Formulation	10 mM HEPES (pH 7.5), 150 mM NaCl, 100 µg per ml BSA and 50% glycerol.
Storage Instructions	Storage at -20°C is recommended, as aliquots may be taken without freeze/thawing due to presence of 50% glycerol. Stable for at least 1 year at -20°C. After date of receipt, stable for at least 1 year at -20°C.
Host	Rabbit
Uniprot ID	Q9Z0U4

### Technical Details

Immunogen	Synthetic phospho-peptide corresponding to amino acid residues surrounding Ser923 of the R1-subunit of rat GABAB receptor, conjugated to keyhole limpet hemocyanin (KLH). Immunogen species is Rat.
Predicted Reactive Species	Bovine, Human, Primate
Cross Reactivity	No cross reactivity with other proteins.
Isotype	IgG
Form	Liquid
Concentration	0.5-1mg/ml, actual concentration vary by lot. Use suggested dilution ratio to decide dilution procedure.

Purification	Prepared from pooled rabbit serum by affinity purification via sequential chromatography on phospho and non-phosphopeptide affinity columns.
Suggested Dilutions	<p>Dilute the sample so that the expected range of concentrations fall within the detection range of this kit.</p> <p>If the expected range of concentration is unknown, a pilot test should be conducted to decide the optimal dilution ratio for your samples.</p> <p>Some PubMed article(s) citing the expression level of this target are as follows:</p> <p>Boster Bio's internal QC testing used:</p> <p>WB: 1:1000</p>

## Anti-Phospho-GABAB R1 (Ser923) Antibody (P07297) Images



Western blot of rat synaptic membrane lysate showing specific immunolabeling of the ~102 kDa GABAB R1 protein phosphorylated at Ser923 in the first lane (-). Phosphospecificity is shown in the second lane (+) where immunolabeling is completely eliminated by blot treatment with lambda phosphatase (lambda-Ptase, 1200 units for 30 min).

## 1 Publications Citing This Product

1. PubMed ID: 10.1155/2021/5566078, The Herbal Constituents in An-Gong-Niu-Huang Wan (AGNH) Protect against Cinnabar- and Realgar- Induced Hepatorenal Toxicity and Accumulations of Mercury and Arsenic in Mice

Visit [bosterbio.com/anti-gabab-r1-ser923-antibody-phospho-specific-p07297-boster.html](https://bosterbio.com/anti-gabab-r1-ser923-antibody-phospho-specific-p07297-boster.html) to see all 1 publications.

## Submit a product review to Biocompare.com

Submit a review of this product to Biocompare.com to receive a \$20 Amazon.com giftcard! Your reviews help your fellow scientists make the right decisions. Thank you for your contribution.



Anti-Phospho-GABAB R1 (Ser923) Antibody