

Anti-Phospho-TAO2 (Ser181) TAOK2 Antibody

Catalog Number: P07466

About TAOK2

In vitro, TAO (thousand and one amino acid) protein kinase 2 (TAO2) activates MAP/ERK kinases (MEKs) 3, 4, and 6 toward their substrates p38 MAP kinase JNK/SAPK (Chen et al., 1999; Chen and Cobb, 2001). This and more recent work has led to the proposal that the TAO protein kinases play an essential role in signaling from physiological agonists to the stress-responsive p38 MAPKs (Chen et al., 2003). Autophosphorylation of TAO may play a role in the mechanism of TAO activation. The MEK binding domain of TAO is autophosphorylated on both serine and threonine residues and Ser-181 is located within this domain.

Overview

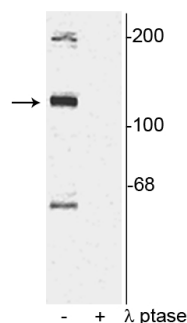
| | |
|----------------------|--|
| Product Name | Anti-Phospho-TAO2 (Ser181) TAOK2 Antibody |
| Reactive Species | Human, Mouse, Rat |
| Description | Boster Bio Anti-Phospho-TAO2 (Ser181) TAOK2 Antibody (Catalog # P07466). Tested in WB applications. This antibody reacts with Human, Mouse, Rat. |
| Application | WB |
| Clonality | Polyclonal 1B9 |
| Formulation | 10 mM HEPES (pH 7.5), 150 mM NaCl, 100 µg per ml BSA and 50% glycerol. |
| Storage Instructions | Storage at -20°C is recommended, as aliquots may be taken without freeze/thawing due to presence of 50% glycerol. Stable for at least 1 year at -20°C. After date of receipt, stable for at least 1 year at -20°C. |
| Host | Rabbit |
| Uniprot ID | Q9UL54 |

Technical Details

| | |
|----------------------------|---|
| Immunogen | Synthetic phospho-peptide corresponding to amino acid residues surrounding Ser181 of human TAO2, conjugated to keyhole limpet hemocyanin (KLH). Immunogen species is Human. |
| Predicted Reactive Species | Canine, Chicken, Xenopus, Zebrafish, Finch |
| Cross Reactivity | No cross reactivity with other proteins. |
| Isotype | IgG |
| Form | Liquid |
| Concentration | 0.5-1mg/ml, actual concentration vary by lot. Use suggested dilution ratio to decide dilution procedure. |

| | |
|---------------------|---|
| Purification | Prepared from pooled rabbit serum by affinity purification via sequential chromatography on phospho and non-phosphopeptide affinity columns. |
| Suggested Dilutions | <p>Dilute the sample so that the expected range of concentrations fall within the detection range of this kit.</p> <p>If the expected range of concentration is unknown, a pilot test should be conducted to decide the optimal dilution ratio for your samples.</p> <p>Some PubMed article(s) citing the expression level of this target are as follows:</p> <p>Boster Bio's internal QC testing used:</p> <p>WB: 1:1000</p> |

Anti-Phospho-TAO2 (Ser181) TAOK2 Antibody (P07466) Images



Submit a product review to Biocompare.com

Submit a review of this product to Biocompare.com to receive a \$20 Amazon.com giftcard! Your reviews help your fellow scientists make the right decisions. Thank you for your contribution.



Anti-Phospho-TAO2 (Ser181) TAOK2 Antibody