

Anti-Phospho-alpha Tubulin (Y272) TUBA1B Rabbit Monoclonal Antibody

Catalog Number: P08382

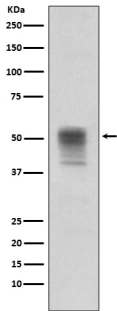
Overview

Product Name	Anti-Phospho-alpha Tubulin (Y272) TUBA1B Rabbit Monoclonal Antibody
Reactive Species	Human
Description	Boster Bio Anti-Phospho-alpha Tubulin (Y272) TUBA1B Rabbit Monoclonal Antibody catalog # P08382. Tested in IF, WB applications. This antibody reacts with Human.
Application	IF, WB
Clonality	Monoclonal BEF-20
Formulation	Rabbit IgG in phosphate buffered saline, pH 7.4, 150mM NaCl, 0.02% sodium azide and 50% glycerol, 0.4-0.5mg/ml BSA.
Storage Instructions	Store at -20°C for one year. For short term storage and frequent use, store at 4°C for up to one month. Avoid repeated freeze-thaw cycles.
Host	Rabbit
Uniprot ID	P68363

Technical Details

Immunogen	A synthesized peptide derived from human Phospho-alpha Tubulin (Y272)
Predicted Reactive Species	Human
Isotype	Rabbit IgG
Form	Liquid
Concentration	Actual concentration vary by lot. Use suggested dilution ratio to decide dilution procedure.
Purification	Affinity-chromatography
Suggested Dilutions	<p>Dilute the sample so that the expected range of concentrations fall within the detection range of this kit.</p> <p>If the expected range of concentration is unknown, a pilot test should be conducted to decide the optimal dilution ratio for your samples.</p> <p>Some PubMed article(s) citing the expression level of this target are as follows:</p> <p>Boster Bio's internal QC testing used:</p> <p>WB 1:500-1:2000</p> <p>ICC/IF 1:50-1:200</p>

Anti-Phospho-alpha Tubulin (Y272) TUBA1B Rabbit Monoclonal Antibody (P08382) Images



Western blot analysis on Jurkat cell lysates treated with pervanadate using alpha Tubulin (phospho Y272) Antibody (P08382).

Electrophoresis was performed on a 5-20% SDS-PAGE gel at 70V (Stacking gel) / 90V (Resolving gel) for 2-3 hours. The sample well of each lane was loaded with 50ug of sample under reducing conditions.

After Electrophoresis, proteins were transferred to a Nitrocellulose membrane at 150mA for 50-90 minutes. Blocked the membrane with 5% Non-fat Milk/ TBS for 1.5 hour at RT. The membrane was incubated with rabbit anti-TUBA1B monoclonal antibody (Catalog # P08382) overnight at 4 then washed with TBS-0.1%Tween 3 times with 5 minutes each and probed with a goat anti-rabbit IgG-HRP secondary antibody at a dilution of 1:10000 for 1.5 hour at RT. The signal is developed using an Enhanced Chemiluminescent detection (ECL) kit (Catalog # EK1002) with Tanon 5200 system. A specific band was detected for TUBA1B

10 Publications Citing This Product

1. PubMed ID: 26269769, Endogenous Nodal promotes melanoma undergoing epithelial-mesenchymal transition via Snail and Slug in vitro and in vivo.
2. PubMed ID: 22935435, Prognostic relevance of melanoma antigen D1 expression in colorectal carcinoma
3. PubMed ID: 28193907, Stem cell autocrine CXCL12/CXCR4 stimulates invasion and metastasis of esophageal cancer

Visit bosterbio.com/anti-phospho-alpha-tubulin-y272-rabbit-monoclonal-antibody-p08382-boster.html to see all 10 publications.

Submit a product review to Biocompare.com

Submit a review of this product to Biocompare.com to receive a \$20 Amazon.com giftcard! Your reviews help your fellow scientists make the right decisions. Thank you for your contribution.



Anti-Phospho-alpha Tubulin (Y272) TUBA1B Rabbit Monoclonal Antibody