

Anti-Phospho-FAM129B (Ser679/683) Antibody

Catalog Number: P09391

About FAM129B

FAM129B, also known as Niban-like protein 1, belongs to a poorly characterized protein family with unknown category and function. Increased expression of the Niban gene has been observed in renal carcinomas (Adachi et al., 2004; Sun et al., 2007). Suppression of FAM129B expression in HeLa cells has been seen to promote apoptosis, suggesting that it can modulate cell death signaling, and may be involved in the ER stress response (Sun et al., 2007). FAM129B is also up-regulated in various types of thyroid tumors and Hashimoto's thyroiditis (Matsumoto et al., 2006). It has been suggested that the MAP kinase dependent phosphorylation of FAM129B is important in controlling melanoma cells, as inhibition of B/Raf/MKK/ERK in melanoma cells represses invasion (Old et al., 2009). It is believed that phosphorylated FAM129B not only derepresses invasion, but also regulates events that promote invasion (Old et al., 2009).

Overview

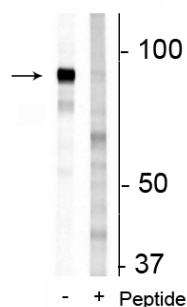
Product Name	Anti-Phospho-FAM129B (Ser679/683) Antibody
Reactive Species	Human, Mouse
Description	Boster Bio Anti-Phospho-FAM129B (Ser679/683) Antibody (Catalog # P09391). Tested in WB applications. This antibody reacts with Human, Mouse.
Application	WB
Clonality	Polyclonal 1B9
Formulation	10 mM HEPES (pH 7.5), 150 mM NaCl, 100 µg per ml BSA and 50% glycerol.
Storage Instructions	Storage at -20°C is recommended, as aliquots may be taken without freeze/thawing due to presence of 50% glycerol. Stable for at least 1 year at -20°C. After date of receipt, stable for at least 1 year at -20°C.
Host	Rabbit
Uniprot ID	Q96TA1

Technical Details

Immunogen	Synthetic phospho-peptide corresponding to amino acid residues surrounding Ser679/683 of human FAM129B, conjugated to keyhole limpet hemocyanin (KLH). Immunogen species is Human.
Predicted Reactive Species	Primate
Cross Reactivity	No cross reactivity with other proteins.
Isotype	IgG
Form	Liquid

Concentration	0.5-1mg/ml, actual concentration vary by lot. Use suggested dilution ratio to decide dilution procedure.
Purification	Prepared from pooled rabbit serum by affinity purification via sequential chromatography on phospho and non-phosphopeptide affinity columns.
Suggested Dilutions	<p>Dilute the sample so that the expected range of concentrations fall within the detection range of this kit.</p> <p>If the expected range of concentration is unknown, a pilot test should be conducted to decide the optimal dilution ratio for your samples.</p> <p>Some PubMed article(s) citing the expression level of this target are as follows:</p> <p>Boster Bio's internal QC testing used:</p> <p>WB: 1:1000</p>

Anti-Phospho-FAM129B (Ser679/683) Antibody (P09391) Images



Western blot of 3T3 cell lysate showing specific immunolabeling of the ~83 kDa FAM129B protein phosphorylated at Ser^{679/683} in the first lane (-). Phosphospecificity is shown in the second lane (+) where immunolabeling is blocked by preadsorption of the phosphopeptide used as the antigen, but not by the corresponding non-phosphopeptide (not shown).

Submit a product review to Biocompare.com

Submit a review of this product to Biocompare.com to receive a \$20 Amazon.com giftcard! Your reviews help your fellow scientists make the right decisions. Thank you for your contribution.



Anti-Phospho-FAM129B (Ser679/683) Antibody