

Anti-Phospho-Histone H4 (Ser1) HIST1H4A Rabbit Monoclonal Antibody, Clone#RM194

Catalog Number: P14495

Overview

Product Name	Anti-Phospho-Histone H4 (Ser1) HIST1H4A Rabbit Monoclonal Antibody, Clone#RM194
Reactive Species	Human, Vertebrates
Description	Boster Bio Anti-Phospho-Histone H4 (Ser1) HIST1H4A Rabbit Monoclonal Antibody, Clone#RM194 (Catalog # P14495). Tested in WB, ICC, ELISA, Luminex applications. This antibody reacts with Human, Vertebrates.
Application	ELISA, ICC, WB, Luminex
Clonality	Monoclonal RM194
Formulation	50% Glycerol/PBS with 1% BSA and 0.09% sodium azide
Storage Instructions	Store at -20°C for one year. Avoid repeated freeze-thaw cycles.
Host	Rabbit
Uniprot ID	P62805

Technical Details

Immunogen	A phospho-peptide corresponding to the Phospho-Histone H4 (pSer1).
Cross Reactivity	This antibody reacts to Histone H4 phosphorylated at Serine 1. The reactivity is not affected by neighbor Arginine 3 modification. No cross-reactivity with Histone H2A phosphorylated at Serine 1.
Isotype	Rabbit IgG
Form	Liquid
Concentration	1 mg/mL
Purification	Protein A affinity purified from an animal origin-free culture supernatant
Suggested Dilutions	<p>Dilute the sample so that the expected range of concentrations fall within the detection range of this kit.</p> <p>If the expected range of concentration is unknown, a pilot test should be conducted to decide the optimal dilution ratio for your samples.</p> <p>Some PubMed article(s) citing the expression level of this target are as follows:</p> <p>Boster Bio's internal QC testing used:</p> <p>WB: 0.5 ug/mL - 2 ug/mL</p> <p>ICC: 1 ug/mL - 2 ug/mL</p> <p>ELISA: 0.2 ug/mL - 1 ug/mL</p> <p>Luminex: 0.1 ug/mL - 1 ug/mL.</p>

Anti-Phospho-Histone H4 (Ser1) HIST1H4A Rabbit Monoclonal Antibody, Clone#RM194 (P14495) Images

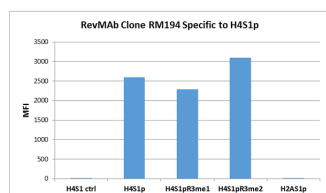


Figure 1. Specificity Test result
RM194 specifically reacts to Histone H4 phosphorylated at Serine 1 (H4S1p). The reactivity is not affected by neighboring Arginine 3 modifications (H4S1pR3me1 and H4S1pR3me2). No cross reactivity with Histone H2A phosphorylated at Serine 1 (H2AS1p).

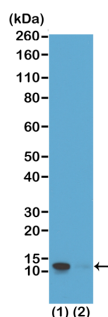


Figure 2. ICC result
Immunocytochemistry of HeLa cells, using Anti-Phospho-Histone H4 (Ser1) Rabbit mAb RM194 (red). Actin filaments have been labeled with fluorescein phalloidin (green).

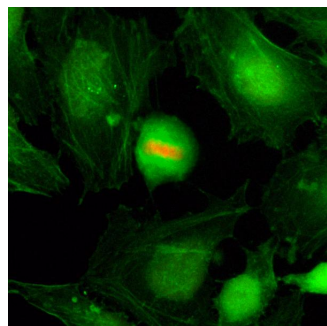


Figure 3. ICC result
Immunocytochemistry of HeLa cells, using Anti-Phospho-Histone H4 (Ser1) Rabbit mAb RM194 (red). Actin filaments have been labeled with fluorescein phalloidin (green).

Submit a product review to Biocompare.com

Submit a review of this product to Biocompare.com to receive a \$20 Amazon.com giftcard! Your reviews help your fellow scientists make the right decisions. Thank you for your contribution.



Anti-Phospho-Histone H4 (Ser1) HIST1H4A Rabbit Monoclonal Antibody, Clone#RM194