

Anti-Phospho MKP-1/2 (Ser296/318) DUSP1 Antibody

Catalog Number: P30451

Overview

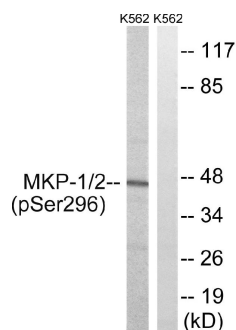
Product Name	Anti-Phospho MKP-1/2 (Ser296/318) DUSP1 Antibody
Reactive Species	Human, Mouse, Rat
Description	Boster Bio Anti-Phospho MKP-1/2 (Ser296/318) DUSP1 Antibody (Catalog# P30451). Tested in WB, IHC-P, IF (paraffin), ELISA applications. This antibody reacts with Human, Mouse, Rat.
Application	ELISA, IHC-P, WB, IF (paraffin)
Clonality	Polyclonal BEF-20
Formulation	PBS containing 50% glycerol, 0.5% BSA and 0.02% sodium azide.
Storage Instructions	Store at -20°C for one year. For short-term storage and frequent use, store at 4°C for up to one month. Avoid repeated freeze-thaw cycles.
Host	Rabbit
Uniprot ID	P28562

Technical Details

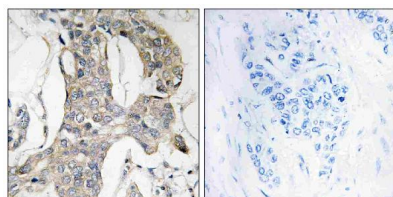
Immunogen	A peptide derived from human MKP-1/2 around the phosphorylation site of Ser296/318. Immunogen sequence location: 261-310
Predicted Reactive Species	Human
Isotype	Rabbit IgG
Form	Liquid
Concentration	0.5-1mg/ml, actual concentration vary by lot. Use suggested dilution ratio to decide dilution procedure.
Purification	The antibody was purified from rabbit antiserum by affinity-chromatography using phospho peptide. The antibody against non-phospho peptide was removed by chromatography using corresponding non-phospho peptide.
Suggested Dilutions	Dilute the sample so that the expected range of concentrations fall within the detection range of this kit. If the expected range of concentration is unknown, a pilot test should be conducted to decide the optimal dilution ratio for your samples. Some PubMed article(s) citing the expression level of this target are as follows: Boster Bio's internal QC testing used: Western Blot, 1:500 - 1:2000 Immunohistochemistry, 1:100 - 1:300 ELISA, 1:5000

	Not yet tested in other applications.
--	---------------------------------------

Anti-Phospho MKP-1/2 (Ser296/318) DUSP1 Antibody (P30451) Images



Western blot analysis of lysates from K562 cells treated with heat shock, using MKP-1/2 (Phospho-Ser296/318) Antibody. The lane on the right is blocked with the phospho peptide.



Immunohistochemistry analysis of paraffin-embedded human breast carcinoma, using MKP-1/2 (Phospho-Ser296/318) Antibody. The picture on the right is blocked with the phospho peptide.

Submit a product review to Biocompare.com

Submit a review of this product to Biocompare.com to receive a \$20 Amazon.com giftcard! Your reviews help your fellow scientists make the right decisions. Thank you for your contribution.



Anti-Phospho MKP-1/2 (Ser296/318) DUSP1 Antibody