

Anti-alpha 2a Adrenergic Receptor/ADRA2A Antibody

Catalog Number: PA1003

About ADRA2A

Alpha-2-adrenergic receptor (ADRA2), also known as platelet type adrenoceptor alpha-2A, is a member of G protein-coupled receptor superfamily. This gene, which can identify a Dral RFLP of the ADRAR gene, mapped to 10q23-q25, is found in the distal region of mouse chromosome 19 and abundantly expressed in giant cell. ADRA2 acts a critical role in regulating neurotransmitter release from sympathetic nerves and from adrenergic neurons in the central nervous system. It has 3 highly homologous subtypes: ADRA2A; ADRA2B and ADRA2C. Studies in mouse suggested that both the ADRA2A and ADRA2C subtypes are required for normal presynaptic control of transmitter release from sympathetic nerves in the heart and from central noradrenergic neurons. ADRA2A receptors inhibited transmitter release at high stimulation frequencies, whereas the ADRA2C subtype modulated neurotransmission at lower levels of nerve activity.

Overview

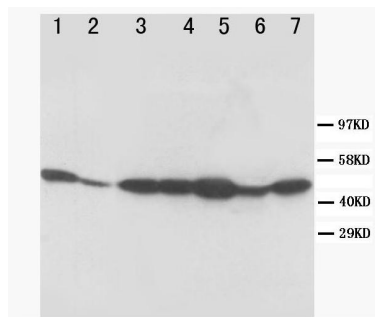
Product Name	Anti-alpha 2a Adrenergic Receptor/ADRA2A Antibody
Reactive Species	Human, Mouse, Rat
Description	Boster Bio Anti-alpha 2a Adrenergic Receptor/ADRA2A Antibody catalog # PA1003. Tested in IHC, WB applications. This antibody reacts with Human, Mouse, Rat.
Conjugate	FITC
Application	IHC, WB
Clonality	Monoclonal BAM-10
Formulation	Each vial contains 5mg BSA, 0.9mg NaCl, 0.2mg Na ₂ HPO ₄ , 0.05mg Thimerosal, 0.05mg NaN ₃ .
Storage Instructions	The product should be stored undiluted at 4°C and should be protected from prolonged exposure to light. Do not freeze.
Host	Hamster
Uniprot ID	P08913

Technical Details

Immunogen	A synthetic peptide corresponding to a sequence at the C-terminus of human alpha 2a Adrenergic Receptor, identical to the related rat and mouse sequences.
Predicted Reactive Species	Hamster
Recommended Detection Systems	Boster recommends HRP Conjugated anti-Mouse IgG Super Vision Assay Kit (SV0001-1) for IHC(P).
Cross Reactivity	No cross reactivity with other proteins.
Form	Lyophilized

Concentration	Add 0.2ml of distilled water will yield a concentration of 500ug/ml.
Purification	Immunogen Affinity Purified
Suggested Dilutions	<p>Dilute the sample so that the expected range of concentrations fall within the detection range of this kit.</p> <p>If the expected range of concentration is unknown, a pilot test should be conducted to decide the optimal dilution ratio for your samples.</p> <p>Some PubMed article(s) citing the expression level of this target are as follows:</p> <p>Boster Bio's internal QC testing used:</p> <p>Immunohistochemistry (Paraffin-embedded Section), 0.5-1ug/ml, Human, Rat, Mouse, By Heat</p> <p>Western blot, 0.1-0.5ug/ml, Human, Rat, Mouse</p>

Anti-alpha 2a Adrenergic Receptor/ADRA2A Antibody (PA1003) Images



Anti-alpha 2a Adrenergic Receptor antibody, PA1003,
Western blotting
Lane 1: Rat Testis Tissue Lysate
Lane 2: Rat Brain Tissue Lysate
Lane 3: MCF-7 Cell Lysate
Lane 4: MM453 Cell Lysate
Lane 5: SMMC Cell Lysate
Lane 6: HELA Cell Lysate
Lane 7: COLO320 Cell Lysate

Submit a product review to Biocompare.com

Submit a review of this product to Biocompare.com to receive a \$20 Amazon.com giftcard! Your reviews help your fellow scientists make the right decisions. Thank you for your contribution.



Anti-alpha 2a Adrenergic Receptor/ADRA2A Antibody