

Anti-C-C chemokine receptor type 5 CCR5 Antibody

Catalog Number: PA1016-1

About CCR5

Human CC chemokine receptor 5 (CCR5), which is 17.5 kb from the CMKBR2 gene, encodes a 352-amino acid protein with a calculated molecular mass of 40,600 Da. It is organized into four exons and two introns. Human CCR5 is a co-receptor for macrophage-tropic strains of human immunodeficiency virus (HIV)-1 and is expressed by bone-marrow-derived cells. CCR5 is expressed on neurons, astrocytes, and microglia in the central nervous system, and on epithelium, endothelium, vascular smooth muscle and fibroblasts in other tissues. Functionally, CCR5 mediates the activation of cells by the chemokines macrophage inflammatory protein-1alpha, macrophage inflammatory protein-1beta, and RANTES, and serves as a fusion cofactor for macrophage-tropic strains of human immunodeficiency virus type 1.

Overview

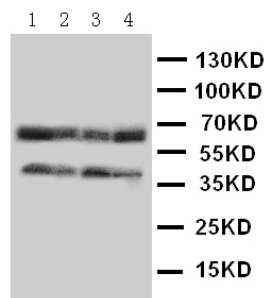
Product Name	Anti-C-C chemokine receptor type 5 CCR5 Antibody
Reactive Species	Human
Description	Boster Bio Anti-C-C chemokine receptor type 5 CCR5 Antibody catalog # PA1016-1. Tested in Flow Cytometry, WB applications. This antibody reacts with Human.
Application	Flow Cytometry, WB
Clonality	Polyclonal
Formulation	Each vial contains 5mg BSA, 0.9mg NaCl, 0.2mg Na ₂ HPO ₄ , 0.05mg Thimerosal, 0.05mg NaN ₃ .
Storage Instructions	Store at -20°C for one year from date of receipt. After reconstitution, at 4°C for one month. It can also be aliquotted and stored frozen at -20°C for six months. Avoid repeated freeze-thaw cycles.
Host	Rabbit
Uniprot ID	P51681

Technical Details

Immunogen	A synthetic peptide corresponding to a sequence in the middle region of human CCR5.
Predicted Reactive Species	Monkey
Recommended Detection Systems	Boster recommends Enhanced Chemiluminescent Kit with anti-Rabbit IgG (EK1002) for Western blot.
Cross Reactivity	No cross-reactivity with other proteins
Isotype	Rabbit IgG
Form	Lyophilized

Concentration	Adding 0.2 ml of distilled water will yield a concentration of 500 ug/ml.
Purification	Immunogen affinity purified.
Suggested Dilutions	<p>Dilute the sample so that the expected range of concentrations fall within the detection range of this kit.</p> <p>If the expected range of concentration is unknown, a pilot test should be conducted to decide the optimal dilution ratio for your samples.</p> <p>Some PubMed article(s) citing the expression level of this target are as follows:</p> <p>Boster Bio's internal QC testing used:</p> <p>Western blot, 0.1-0.5ug/ml, Human</p> <p>Flow Cytometry, 1-3ug/1x10⁶ cells, Human</p>

Anti-C-C chemokine receptor type 5 CCR5 Antibody (PA1016-1) Images



Anti-CCR5 antibody, PA1016-1, Western blotting

Lane 1: COLO320 Cell Lysate

Lane 2: MCF-7 Cell Lysate

Lane 3: SMMC Cell Lysate

Lane 4: JURKAT Cell Lysate

2 Publications Citing This Product

1. PubMed ID: 23063706, Li G, Xu H, Zhu S, Xu W, Qin S, Liu S, Tu G, Peng H, Qiu S, Yu S, Zhu Q, Fan B, Zheng C, Li G, Liang S. Brain Res Bull. 2013 Jan;90:79-87. Doi: 10.1016/J.Brainresbull.2012.10.002. Epub 2012 Oct 9. Effects Of Neferine On Ccl5 And Ccr5 Expression In...

2. PubMed ID: 22238429, Study on CCR5 analogs and affinity peptides

Visit bosterbio.com/anti-ccr5-antibody-pa1016-1-boster.html to see all 2 publications.

Submit a product review to Biocompare.com

Submit a review of this product to Biocompare.com to receive a \$20 Amazon.com giftcard! Your reviews help your fellow scientists make the right decisions. Thank you for your contribution.



Anti-C-C chemokine receptor type 5 CCR5 Antibody