

Anti-C Reactive Protein/CRP Antibody

Catalog Number: PA1028

About CRP

C Reactive Protein (CRP) is a major acute phase reactant synthesized primarily in the liver hepatocytes. It is composed of 5 identical, 21,500-molecular weight subunits. CRP mediates activities associated with preimmune nonspecific host resistance. CRP shows the strongest association with cardiovascular events. It is detectable on the surface of about 4% of normal peripheral blood lymphocytes. Acute phase reactant CRP is produced in the liver.

Overview

Product Name	Anti-C Reactive Protein/CRP Antibody
Reactive Species	Human
Description	Boster Bio Anti-C Reactive Protein/CRP Antibody catalog # PA1028. Tested in WB applications. This antibody reacts with Human.
Application	WB
Clonality	Polyclonal
Formulation	Each vial contains 5mg BSA, 0.9mg NaCl, 0.2mg Na ₂ HPO ₄ , 0.05mg Thimerosal, 0.05mg NaN ₃ .
Storage Instructions	Store at -20°C for one year from date of receipt. After reconstitution, at 4°C for one month. It can also be aliquotted and stored frozen at -20°C for six months. Avoid repeated freeze-thaw cycles.
Host	Rabbit
Uniprot ID	P02741

Technical Details

Immunogen	A synthetic peptide corresponding to a sequence at the C-terminus of human C Reactive Protein.
Predicted Reactive Species	Hamster
Recommended Detection Systems	Boster recommends Enhanced Chemiluminescent Kit with anti-Rabbit IgG (EK1002) for Western blot.
Cross Reactivity	No cross-reactivity with other proteins
Isotype	Rabbit IgG
Form	Lyophilized
Concentration	Adding 0.2 ml of distilled water will yield a concentration of 500 ug/ml.
Purification	Immunogen affinity purified.

Suggested Dilutions

Dilute the sample so that the expected range of concentrations fall within the detection range of this kit.

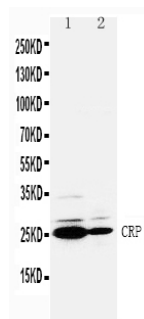
If the expected range of concentration is unknown, a pilot test should be conducted to decide the optimal dilution ratio for your samples.

Some PubMed article(s) citing the expression level of this target are as follows:

Boster Bio's internal QC testing used:

Western blot, 0.1-0.5ug/ml, Human

Anti-C Reactive Protein/CRP Antibody (PA1028) Images



Anti-C Reactive Protein antibody, PA1028, Western blotting
Lane 1: SMMC Cell Lysate
Lane 2: HT1080 Cell Lysate

1 Publications Citing This Product

1. PubMed ID: 24137221, Shi L, Song J, Zhang X, Li Y, Li H. Exp Ther Med. 2013 Aug;6(2):532-536. Epub 2013 May 28. Correlation Between The Microinflammatory State And Left Ventricular Structural And Functional Changes In Maintenance Haemodialysis Patients.

Visit bosterbio.com/anti-c-reactive-protein-antibody-pa1028-boster.html to see all 1 publications.

Submit a product review to Biocompare.com

Submit a review of this product to Biocompare.com to receive a \$20 Amazon.com giftcard! Your reviews help your fellow scientists make the right decisions. Thank you for your contribution.



Anti-C Reactive Protein/CRP Antibody