

Anti-GLUT4 SLC2A4 Antibody

Catalog Number: PA1039

About SLC2A4

Facilitated glucose transport by mammalian cells is not a property of a single protein but an activity associated with a family of structurally related proteins. Glucose transporter 4 is a insulin-responsive glucose transporter. It belongs to solute carrier family 2, member 1. Insulin alters the subcellular localization of GLUT4 vesicles in human muscle, and that this effect is impaired equally in insulin-resistant subjects with and without diabetes. A similar pattern of defects cause insulin resistance in human adipocytes. Human insulin resistance involves a defect in GLUT4 traffic and targeting leading to accumulation in a dense membrane compartment from which insulin is unable to recruit GLUT4 to the cell surface.

Overview

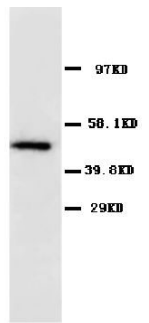
Product Name	Anti-GLUT4 SLC2A4 Antibody
Reactive Species	Human, Mouse, Rat
Description	Boster Bio Anti-GLUT4 SLC2A4 Antibody catalog # PA1039. Tested in IHC, WB applications. This antibody reacts with Human, Mouse, Rat.
Conjugate	FITC
Application	IHC, WB
Clonality	Monoclonal BAM-10
Formulation	Each vial contains 5mg BSA, 0.9mg NaCl, 0.2mg Na ₂ HPO ₄ , 0.05mg Thimerosal, 0.05mg NaN ₃ .
Storage Instructions	The product should be stored undiluted at 4°C and should be protected from prolonged exposure to light. Do not freeze.
Host	Hamster
Uniprot ID	P14672

Technical Details

Immunogen	A synthetic peptide corresponding to a sequence at the C-terminal of human glucose transporter 4, identical to the related rat and mouse sequences.
Predicted Reactive Species	Hamster
Recommended Detection Systems	Boster recommends Enhanced Chemiluminescent Kit with anti-Mouse IgG (EK1001) for Western blot, and HRP Conjugated anti-Mouse IgG Super Vision Assay Kit (SV0001-1) for IHC(P).
Cross Reactivity	No cross reactivity with other proteins
Form	Lyophilized
Concentration	Add 0.2ml of distilled water will yield a concentration of 500ug/ml.

Purification	Immunogen Affinity Purified
Suggested Dilutions	<p>Dilute the sample so that the expected range of concentrations fall within the detection range of this kit.</p> <p>If the expected range of concentration is unknown, a pilot test should be conducted to decide the optimal dilution ratio for your samples.</p> <p>Some PubMed article(s) citing the expression level of this target are as follows:</p> <p>Boster Bio's internal QC testing used:</p> <p>Immunohistochemistry (Paraffin-embedded Section), 0.5-1ug/ml, Rat, Human, Mouse, By Heat</p> <p>Western blot, 0.1-0.5ug/ml, Rat, Human, Mouse</p>

Anti-GLUT4 SLC2A4 Antibody (PA1039) Images



Anti-GLUT4 antibody, PA1039, Western blotting
WB: Rat Skeletal Muscle Tissue Lysate



Anti-GLUT4 antibody, PA1039, IHC(P)
IHC(P): Rat Skeletal Muscle Tissue

1 Publications Citing This Product

1. PubMed ID: 25774202, Zhou X, Wu W, Chen J, Wang X, Wang Y. Nutr Metab (Lond). 2015 Mar 8;12:10. Doi: 10.1186/S12986-015-0006-5. Ecollection 2015. Amp-Activated Protein Kinase Is Required For The Anti-Adipogenic Effects Of Alpha-Linolenic Acid.

Visit bosterbio.com/anti-glut4-antibody-pa1039-boster.html to see all 1 publications.

Submit a product review to Biocompare.com

Submit a review of this product to Biocompare.com to receive a \$20 Amazon.com giftcard! Your reviews help your fellow scientists make the right decisions. Thank you for your contribution.



Anti-GLUT4 SLC2A4 Antibody