

## Anti-Morg1/WDR83 Antibody

Catalog Number: PA1053

### About WDR83

MORG1 (mitogen-activated protein kinase organizer 1), a member of the WD-40 protein family that was isolated as a binding partner of the extracellular signal-regulated kinase (ERK) pathway scaffold protein MP1. MORG1 specifically associates with several components of the ERK pathway, including MP1, Raf-1, MEK, and ERK, and stabilizes their assembly into an oligomeric complex. MORG1 facilitates ERK activation when cells are stimulated with lysophosphatidic acid, phorbol 12-myristate 13-acetate, or serum, but not in response to epidermal growth factor. Suppression of MORG1 by short interfering RNA leads to a marked reduction in ERK activity when cells are stimulated with serum. MORG1 is a component of a modular scaffold system that participates in the regulation of agonist-specific ERK signaling.

### Overview

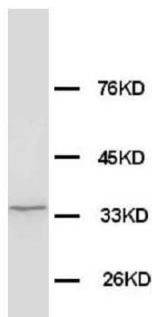
Product Name	Anti-Morg1/WDR83 Antibody
Reactive Species	Human, Mouse, Rat
Description	Boster Bio Anti-Morg1/WDR83 Antibody catalog # PA1053. Tested in IHC, WB applications. This antibody reacts with Human, Mouse, Rat.
Application	IHC, WB
Clonality	Polyclonal
Formulation	Each vial contains 5mg BSA, 0.9mg NaCl, 0.2mg Na <sub>2</sub> HPO <sub>4</sub> , 0.05mg Thimerosal, 0.05mg NaN <sub>3</sub> .
Storage Instructions	Store at -20°C for one year from date of receipt. After reconstitution, at 4°C for one month. It can also be aliquotted and stored frozen at -20°C for six months. Avoid repeated freeze-thaw cycles.
Host	Rabbit
Uniprot ID	Q9BRX9

### Technical Details

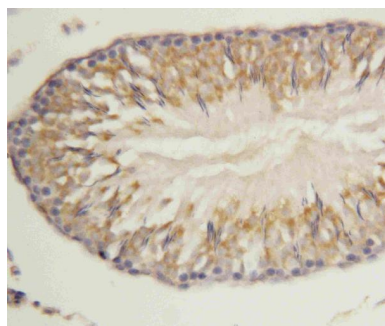
Immunogen	A synthetic peptide corresponding to a sequence at the N-terminus of human Morg1, identical to the related mouse and rat sequences.
Predicted Reactive Species	Chicken
Recommended Detection Systems	Boster recommends Enhanced Chemiluminescent Kit with anti-Rabbit IgG (EK1002) for Western blot, and HRP Conjugated anti-Rabbit IgG Super Vision Assay Kit (SV0002-1) for IHC(P).
Cross Reactivity	No cross-reactivity with other proteins
Isotype	Rabbit IgG
Form	Lyophilized

Concentration	Adding 0.2 ml of distilled water will yield a concentration of 500 ug/ml.
Purification	Immunogen affinity purified.
Suggested Dilutions	<p>Dilute the sample so that the expected range of concentrations fall within the detection range of this kit.</p> <p>If the expected range of concentration is unknown, a pilot test should be conducted to decide the optimal dilution ratio for your samples.</p> <p>Some PubMed article(s) citing the expression level of this target are as follows:</p> <p>Boster Bio's internal QC testing used:</p> <p>Immunohistochemistry (Paraffin-embedded Section), 0.5-1ug/ml, Human, Rat, Mouse, By Heat</p> <p>Western blot, 0.1-0.5ug/ml, Human, Rat, Mouse</p>

## Anti-Morg1/WDR83 Antibody (PA1053) Images



Anti-Morg1 antibody, PA1053, Western blotting  
WB: Rat Brain Tissue Lysate



Anti-Morg1 antibody, PA1053, IHC(P)  
IHC(P): Rat Lung Tissue

## Submit a product review to Biocompare.com

Submit a review of this product to Biocompare.com to receive a \$20 Amazon.com giftcard! Your reviews help your fellow scientists make the right decisions. Thank you for your contribution.



Anti-Morg1/WDR83 Antibody