

Anti-NSE/ENO2 Antibody

Catalog Number: PA1061

About ENO2

NSE (neuron specific enolase), also known as Enolase 2 (ENO2), is found in elevated concentrations in plasma in certain neoplasias. The enolases catalyze the interconversion of 2-phosphoglycerate to phosphoenolpyruvate in the glycolytic pathway. ENO2 gene contains 12 exons distributed over 9,213 nucleotides. Human neurone-specific enolase is mapped to chromosome 12p13.

Overview

Product Name	Anti-NSE/ENO2 Antibody
Reactive Species	Human, Mouse, Rat
Description	Boster Bio Anti-NSE/ENO2 Antibody catalog # PA1061. Tested in IHC, WB applications. This antibody reacts with Human, Mouse, Rat.
Application	IHC, WB
Clonality	Polyclonal
Formulation	Each vial contains 5mg BSA, 0.9mg NaCl, 0.2mg Na ₂ HPO ₄ , 0.05mg Thimerosal, 0.05mg NaN ₃ .
Storage Instructions	Store at -20°C for one year from date of receipt. After reconstitution, at 4°C for one month. It can also be aliquotted and stored frozen at -20°C for six months. Avoid repeated freeze-thaw cycles.
Host	Rabbit
Uniprot ID	P09104

Technical Details

Immunogen	A synthetic peptide corresponding to a sequence at the C-terminus of human NSE, identical to the related mouse and rat sequences.
Predicted Reactive Species	Hamster
Recommended Detection Systems	Boster recommends Enhanced Chemiluminescent Kit with anti-Rabbit IgG (EK1002) for Western blot, and HRP Conjugated anti-Rabbit IgG Super Vision Assay Kit (SV0002-1) for IHC(P).
Cross Reactivity	No cross-reactivity with other proteins
Isotype	Rabbit IgG
Form	Lyophilized
Concentration	Adding 0.2 ml of distilled water will yield a concentration of 500 ug/ml.
Purification	Immunogen affinity purified.

Suggested Dilutions

Dilute the sample so that the expected range of concentrations fall within the detection range of this kit.

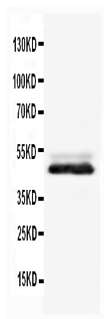
If the expected range of concentration is unknown, a pilot test should be conducted to decide the optimal dilution ratio for your samples.

Some PubMed article(s) citing the expression level of this target are as follows:

Boster Bio's internal QC testing used:

Immunohistochemistry (Paraffin-embedded Section), 0.5-1ug/ml, Rat, Human, Mouse, By Heat
Western blot, 0.1-0.5ug/ml, Rat, Human, Mouse

Anti-NSE/ENO2 Antibody (PA1061) Images



Anti-NSE antibody, PA1061, Western blotting
WB: Rat Brain Tissue Lysate

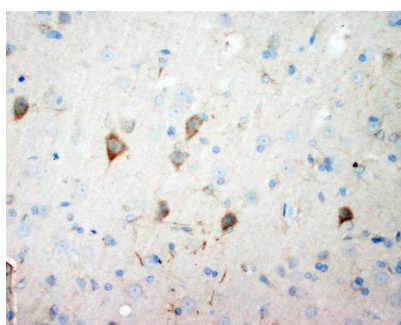


Figure 2. IHC analysis of NSE using anti-NSE antibody (PA1061).

NSE was detected in paraffin-embedded section of rat brain tissue. Heat mediated antigen retrieval was performed in citrate buffer (pH6, epitope retrieval solution) for 20 mins. The tissue section was blocked with 10% goat serum. The tissue section was then incubated with 1ug/ml rabbit anti-NSE Antibody (PA1061) overnight at 4°C. Biotinylated goat anti-rabbit IgG was used as secondary antibody and incubated for 30 minutes at 37°C. The tissue section was developed using Streptavidin-Biotin-Complex (SABC)(Catalog # SA1022) with DAB as the chromogen.

48 Publications Citing This Product

1. PubMed ID: 10.3892/or.16.5.1021, Histological type of oncogenity and expression of cell cycle genes in tumor cells from human mesenchymal stem cells
2. PubMed ID: 10.3892/ijmm.2011.734, Involvement of calmodulin and actin in directed differentiation of rat cortical neural stem cells into neurons
3. PubMed ID: 10.4103/1673-5374.211193, Protective effects of Dendrobium nobile Lindl. alkaloids on amyloid beta (25-35)-induced neuronal injury

Visit bosterbio.com/anti-nse-antibody-pa1061-boster.html to see all 48 publications.

Submit a product review to Biocompare.com

Submit a review of this product to Biocompare.com to receive a \$20 Amazon.com giftcard! Your reviews help your fellow scientists make the right decisions. Thank you for your contribution.



Anti-NSE/ENO2 Antibody