

Anti-Sonic Hedgehog/SHH Antibody

Catalog Number: PA1072-1

About SHH

The mouse, chicken, and zebrafish Shh homologs are highly conserved. SHH expression was not detected in adult tissues examined. However, it was expressed in fetal intestine, liver, lung, and kidney. SHH gene is mapped to 7q. SHH mutations are not a frequent cause of isolated oral clefts.

Overview

Product Name	Anti-Sonic Hedgehog/SHH Antibody
Reactive Species	Human, Mouse, Rat
Description	Boster Bio Anti-Sonic Hedgehog/SHH Antibody catalog # PA1072-1. Tested in IHC, WB applications. This antibody reacts with Human, Mouse, Rat.
Application	IHC, WB
Clonality	Polyclonal
Formulation	Each vial contains 5mg BSA, 0.9mg NaCl, 0.2mg Na ₂ HPO ₄ , 0.05mg Thimerosal, 0.05mg NaN ₃ .
Storage Instructions	Store at -20°C for one year from date of receipt. After reconstitution, at 4°C for one month. It can also be aliquotted and stored frozen at -20°C for six months. Avoid repeated freeze-thaw cycles.
Host	Rabbit
Uniprot ID	Q15465

Technical Details

Immunogen	A synthetic peptide corresponding to a sequence at the N-terminus of human Sonic Hedgehog, identical to the related rat and mouse sequences.
Predicted Reactive Species	Hamster
Recommended Detection Systems	Boster recommends Enhanced Chemiluminescent Kit with anti-Rabbit IgG (EK1002) for Western blot, and HRP Conjugated anti-Rabbit IgG Super Vision Assay Kit (SV0002-1) for IHC(P).
Cross Reactivity	No cross-reactivity with other proteins
Isotype	Rabbit IgG
Form	Lyophilized
Concentration	Adding 0.2 ml of distilled water will yield a concentration of 500 ug/ml.
Purification	Immunogen affinity purified.

Suggested Dilutions

Dilute the sample so that the expected range of concentrations fall within the detection range of this kit.

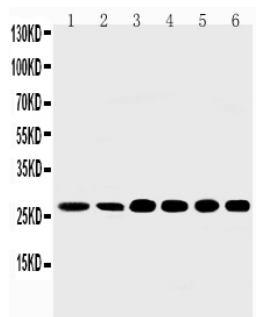
If the expected range of concentration is unknown, a pilot test should be conducted to decide the optimal dilution ratio for your samples.

Some PubMed article(s) citing the expression level of this target are as follows:

Boster Bio's internal QC testing used:

Immunohistochemistry (Paraffin-embedded Section), 0.5-1ug/ml, Human, Rat, Mouse, By Heat
Western blot, 0.1-0.5ug/ml, Human, Rat, Mouse

Anti-Sonic Hedgehog/SHH Antibody (PA1072-1) Images



Anti-Sonic Hedgehog antibody, PA1072-1, Western blotting

Lane 1: Rat Liver Tissue Lysate

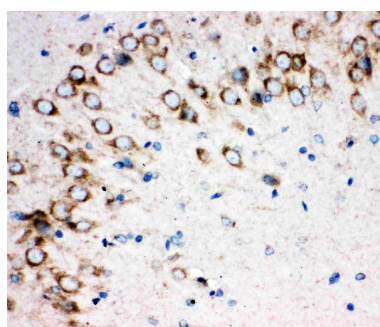
Lane 2: Rat Intestine Tissue Lysate

Lane 3: HELA Cell Lysate

Lane 4: A549 Cell Lysate

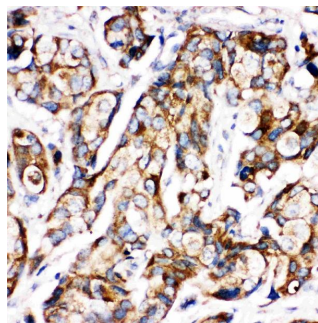
Lane 5: SMMC Cell Lysate

Lane 6: MM231 Cell Lysate



Anti-Sonic Hedgehog antibody, PA1072-1, IHC(P)

IHC(P): Rat Brain Tissue



Anti-Sonic Hedgehog antibody, PA1072-1, IHC(P)

IHC(P): Human Mammary Tissue

2 Publications Citing This Product

1. PubMed ID: 33380798, Cao W,Zhang C,Chen R,Wu Q,Xu R,Zhang L,Zhang X. A Novel Cerebroprotein Hydrolysate, CH1, Ameliorates Chronic Focal Cerebral Ischemia Injury by Promoting White Matter Integrity via the Shh/Ptch-1/Gli-1 Signaling Pathway.Neuropsychiatr Dis Treat.2020 Dec 23

2. PubMed ID: 20938369, Dai J, Ai K, Du Y, Chen G. Pancreas. 2011 Mar;40(2):233-6. Doi: 10.1097/Mpa.0B013E3181F7E09F. Sonic Hedgehog Expression Correlates With Distant Metastasis In Pancreatic Adenocarcinoma.

Visit bosterbio.com/anti-sonic-hedgehog-antibody-pa1072-1-boster.html to see all 2 publications.

Submit a product review to Biocompare.com

Submit a review of this product to Biocompare.com to receive a \$20 Amazon.com giftcard! Your reviews help your fellow scientists make the right decisions. Thank you for your contribution.



Anti-Sonic Hedgehog/SHH Antibody