

## Anti-Sonic Hedgehog/SHH Antibody

Catalog Number: PA1072

### About SHH

The mouse, chicken, and zebrafish Shh homologs are highly conserved. SHH expression was not detected in adult tissues examined; however, it was expressed in fetal intestine, liver, lung, and kidney. SHH gene is mapped to 7q. SHH mutations are not a frequent cause of isolated oral clefts.

### Overview

Product Name	Anti-Sonic Hedgehog/SHH Antibody
Reactive Species	Human, Mouse, Rat
Description	Boster Bio Anti-Sonic Hedgehog/SHH Antibody catalog # PA1072. Tested in IHC, WB applications. This antibody reacts with Human, Mouse, Rat.
Conjugate	FITC
Application	IHC, WB
Clonality	Monoclonal BAM-10
Formulation	Each vial contains 5mg BSA, 0.9mg NaCl, 0.2mg Na <sub>2</sub> HPO <sub>4</sub> , 0.05mg Thimerosal, 0.05mg NaN <sub>3</sub> .
Storage Instructions	The product should be stored undiluted at 4°C and should be protected from prolonged exposure to light. Do not freeze.
Host	Hamster
Uniprot ID	Q15465

### Technical Details

Immunogen	A synthetic peptide corresponding to a sequence at the N-terminus of human Sonic Hedgehog, identical to the related mouse and rat sequences.
Predicted Reactive Species	Hamster
Recommended Detection Systems	Boster recommends Enhanced Chemiluminescent Kit with anti-Mouse IgG (EK1001) for Western blot, and HRP Conjugated anti-Mouse IgG Super Vision Assay Kit (SV0001-1) for IHC(P).
Cross Reactivity	No cross reactivity with other proteins
Form	Lyophilized
Concentration	Add 0.2ml of distilled water will yield a concentration of 500ug/ml.
Purification	Immunogen Affinity Purified

**Suggested Dilutions**

Dilute the sample so that the expected range of concentrations fall within the detection range of this kit.

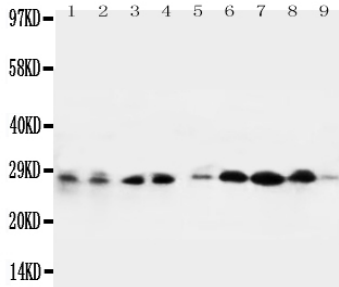
If the expected range of concentration is unknown, a pilot test should be conducted to decide the optimal dilution ratio for your samples.

Some PubMed article(s) citing the expression level of this target are as follows:

Boster Bio's internal QC testing used:

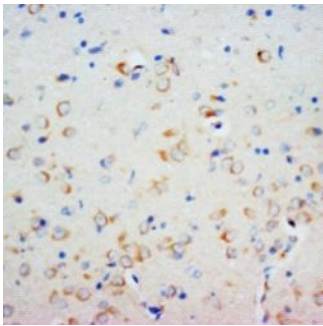
Immunohistochemistry (Paraffin-embedded Section), 0.5-1ug/ml, Rat, Human, Mouse, By Heat  
Western blot, 0.1-0.5ug/ml, Rat, Human, Mouse

## Anti-Sonic Hedgehog/SHH Antibody (PA1072) Images



Anti-Sonic Hedgehog antibody, PA1072, Western blotting

Lane 1: Rat Liver Tissue Lysate  
Lane 2: Rat Liver Tissue Lysate  
Lane 3: Rat Brain Tissue Lysate  
Lane 4: Rat Brain Tissue Lysate  
Lane 5: MCF-7 Cell Lysate  
Lane 6: HELA Cell Lysate



Anti-Sonic Hedgehog antibody, PA1072, IHC(P)  
IHC(P): Rat Brain Tissue

## 1 Publications Citing This Product

1. PubMed ID: 20938369, Dai J, Ai K, Du Y, Chen G. Pancreas. 2011 Mar;40(2):233-6. Doi: 10.1097/Mpa.0B013E3181F7E09F. Sonic Hedgehog Expression Correlates With Distant Metastasis In Pancreatic Adenocarcinoma.

Visit [bosterbio.com/anti-sonic-hedgehog-antibody-pa1072-boster.html](http://bosterbio.com/anti-sonic-hedgehog-antibody-pa1072-boster.html) to see all 1 publications.

## Submit a product review to Biocompare.com

Submit a review of this product to Biocompare.com to receive a \$20 Amazon.com giftcard! Your reviews help your fellow scientists make the right decisions. Thank you for your contribution.



Anti-Sonic Hedgehog/SHH Antibody