

Anti-Metalloproteinase inhibitor 2 TIMP2 Antibody

Catalog Number: PA1076

About TIMP2

TIMP metalloproteinase inhibitor 2, a tissue inhibitor of metalloproteinases, also known as TIMP2, is a human gene, thought to be a metastasis suppressor. This gene is a member of the TIMP gene family. The proteins encoded by this gene family are natural inhibitors of the matrix metalloproteinases, a group of peptidases involved in degradation of the extracellular matrix. In addition to an inhibitory role against metalloproteinases, the encoded protein has a unique role among TIMP family members in its ability to directly suppress the proliferation of endothelial cells. As a result, the encoded protein may be critical to the maintenance of tissue homeostasis by suppressing the proliferation of quiescent tissues in response to angiogenic factors, and by inhibiting protease activity in tissues undergoing remodelling of the extracellular matrix.

Overview

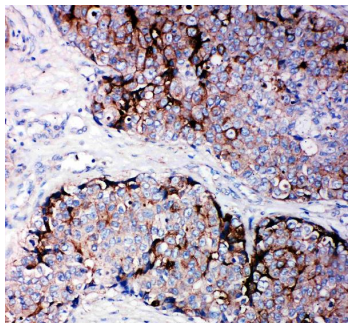
Product Name	Anti-Metalloproteinase inhibitor 2 TIMP2 Antibody
Reactive Species	Human, Mouse, Rat
Description	Boster Bio Anti-Metalloproteinase inhibitor 2 TIMP2 Antibody catalog # PA1076. Tested in ELISA, IHC applications. This antibody reacts with Human, Mouse, Rat.
Application	ELISA, IHC
Clonality	Polyclonal
Formulation	Each vial contains 5mg BSA, 0.9mg NaCl, 0.2mg Na ₂ HPO ₄ , 0.05mg Thimerosal, 0.05mg NaN ₃ .
Storage Instructions	Store at -20°C for one year from date of receipt. After reconstitution, at 4°C for one month. It can also be aliquotted and stored frozen at -20°C for six months. Avoid repeated freeze-thaw cycles.
Host	Rabbit
Uniprot ID	P16035

Technical Details

Immunogen	A synthetic peptide corresponding to a sequence at the C-terminus of human TIMP2, identical to the related mouse and rat sequences.
Predicted Reactive Species	Hamster
Recommended Detection Systems	Boster recommends HRP Conjugated anti-Rabbit IgG Super Vision Assay Kit (SV0002-1) for IHC(P).
Cross Reactivity	No cross-reactivity with other proteins
Isotype	Rabbit IgG
Form	Lyophilized

Concentration	Adding 0.2 ml of distilled water will yield a concentration of 500 ug/ml.
Purification	Immunogen affinity purified.
Suggested Dilutions	<p>Dilute the sample so that the expected range of concentrations fall within the detection range of this kit.</p> <p>If the expected range of concentration is unknown, a pilot test should be conducted to decide the optimal dilution ratio for your samples.</p> <p>Some PubMed article(s) citing the expression level of this target are as follows:</p> <p>Boster Bio's internal QC testing used:</p> <p>Immunohistochemistry (Paraffin-embedded Section), 0.5-1ug/ml, Human, Mouse, Rat, By Heat ELISA , 0.1-0.5ug/ml, Human</p>

Anti-Metalloproteinase inhibitor 2 TIMP2 Antibody (PA1076) Images



Anti-TIMP2 antibody, PA1076, IHC(P)
IHC(P): Human Mammary Cancer Tissue

16 Publications Citing This Product

1. PubMed ID: 27575818, Effect of Novel Gasotransmitter hydrogen sulfide on renal fibrosis and connexins expression in diabetic rats
2. PubMed ID: 27453531, The inhibition of calpains ameliorates vascular restenosis through MMP2/TGF- β 1 pathway
3. PubMed ID: 22200632, Zhang Jt, Fan Yz, Chen Cq, Zhao Zm, Sun W. Int J Oncol. 2012 May;40(5):1501-14. Doi: 10.3892/Ijo.2011.1314. Epub 2011 Dec 21. Norcantharidin: A Potential Antiangiogenic Agent For Gallbladder Cancers In Vitro And In Vivo.

Visit bosterbio.com/anti-timp2-antibody-pa1076-boster.html to see all 16 publications.

Submit a product review to Biocompare.com

Submit a review of this product to Biocompare.com to receive a \$20 Amazon.com giftcard! Your reviews help your fellow scientists make the right decisions. Thank you for your contribution.



Anti-Metalloproteinase inhibitor 2 TIMP2 Antibody