

Anti-Metalloproteinase inhibitor 3 TIMP3 Antibody

Catalog Number: PA1077

About TIMP3

Metalloproteinase inhibitor 3 is a protein that in humans is encoded by the TIMP3 gene. It is mapped to 22q12.1-q13.2. This gene belongs to the tissue inhibitor of metalloproteinases gene family. The proteins encoded by this gene family are inhibitors of the matrix metalloproteinases, a group of peptidases involved in degradation of the extracellular matrix (ECM). Expression of this gene is induced in response to mitogenic stimulation and this netrin domain-containing protein is localized to the ECM. Mutations in this gene have been associated with the autosomal dominant disorder Sorsby's fundus dystrophy.

Overview

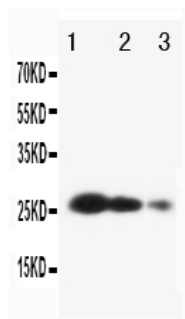
Product Name	Anti-Metalloproteinase inhibitor 3 TIMP3 Antibody
Reactive Species	Human, Mouse, Rat
Description	Boster Bio Anti-Metalloproteinase inhibitor 3 TIMP3 Antibody catalog # PA1077. Tested in ELISA, WB applications. This antibody reacts with Human, Mouse, Rat.
Application	ELISA, WB
Clonality	Polyclonal
Formulation	Each vial contains 5mg BSA, 0.9mg NaCl, 0.2mg Na ₂ HPO ₄ , 0.05mg Thimerosal, 0.05mg NaN ₃ .
Storage Instructions	Store at -20°C for one year from date of receipt. After reconstitution, at 4°C for one month. It can also be aliquotted and stored frozen at -20°C for six months. Avoid repeated freeze-thaw cycles.
Host	Rabbit
Uniprot ID	P35625

Technical Details

Immunogen	A synthetic peptide corresponding to a sequence at the C-terminus of human TIMP3, different from the related rat and mouse sequences by one amino acid.
Predicted Reactive Species	Chicken
Recommended Detection Systems	Boster recommends Enhanced Chemiluminescent Kit with anti-Rabbit IgG (EK1002) for Western blot.
Cross Reactivity	No cross-reactivity with other proteins
Isotype	Rabbit IgG
Form	Lyophilized
Concentration	Adding 0.2 ml of distilled water will yield a concentration of 500 ug/ml.

Purification	Immunogen affinity purified.
Suggested Dilutions	<p>Dilute the sample so that the expected range of concentrations fall within the detection range of this kit.</p> <p>If the expected range of concentration is unknown, a pilot test should be conducted to decide the optimal dilution ratio for your samples.</p> <p>Some PubMed article(s) citing the expression level of this target are as follows:</p> <p>Boster Bio's internal QC testing used:</p> <p>ELISA , 0.1-0.5ug/ml, Human, -</p> <p>Western blot, 0.1-0.5ug/ml, Human, Mouse, Rat</p>

Anti-Metalloproteinase inhibitor 3 TIMP3 Antibody (PA1077) Images



Anti-TIMP3 antibody, PA1077, Western blotting
Lane 1: Recombinant Human TIMP3 Protein 10ng
Lane 2: Recombinant Human TIMP3 Protein 5ng
Lane 3: Recombinant Human TIMP3 Protein 2.5ng

2 Publications Citing This Product

1. PubMed ID: 23819566, Promoter methylation and expression of TIMP3 gene in gastric cancer
2. PubMed ID: 17657847, Bai Yx, Yi JI, Li Jf, Sui H. World J Gastroenterol. 2007 Jul 28;13(28):3883-5. Clinicopathologic Significance Of Bag1 And Timp3 Expression In Colon Carcinoma.

Visit bosterbio.com/anti-timp3-antibody-pa1077-boster.html to see all 2 publications.

Submit a product review to Biocompare.com

Submit a review of this product to Biocompare.com to receive a \$20 Amazon.com giftcard! Your reviews help your fellow scientists make the right decisions. Thank you for your contribution.



Anti-Metalloproteinase inhibitor 3 TIMP3 Antibody