

Anti-Orexin Receptor 1/HCRT1R Antibody

Catalog Number: PA1100

About HCRT1R

Orexins are endogenous peptides that activate Orexin Receptor type 1 and type 2, two closely related G-protein coupled receptors. Orexins-A and -B are hypothalamic peptides derived from a precursor called preproorexin and affect the stimulation of food intake. They act on G protein receptors named orexin receptor-1 (OX1R) and orexin receptor-2 (OX2R), respectively. Stimulation of these receptors by orexins causes an increase in intracellular calcium levels in hypothalamic cells in vitro. In vivo, orexins control feeding and may also be involved in modulating sleep-wake cycles and other hypothalamic functions.

Overview

Product Name	Anti-Orexin Receptor 1/HCRT1R Antibody
Reactive Species	Human, Mouse, Rat
Description	Boster Bio Anti-Orexin Receptor 1/HCRT1R Antibody catalog # PA1100. Tested in IHC, WB applications. This antibody reacts with Human, Mouse, Rat.
Application	IHC, WB
Clonality	Polyclonal G9
Formulation	Each vial contains 5mg BSA, 0.9mg NaCl, 0.2mg Na ₂ HPO ₄ , 0.05mg Thimerosal, 0.05mg NaN ₃ .
Storage Instructions	Store at -20°C for one year from date of receipt. After reconstitution, at 4°C for one month. It can also be aliquotted and stored frozen at -20°C for six months. Avoid repeated freeze-thaw cycles.
Host	Rabbit
Uniprot ID	O43613

Technical Details

Immunogen	A synthetic peptide corresponding to a sequence at the C-terminus of human Orexin Receptor 1, identical to the related mouse and rat sequences.
Predicted Reactive Species	Hamster
Recommended Detection Systems	Boster recommends Enhanced Chemiluminescent Kit with anti-Rabbit IgG (EK1002) for Western blot, and HRP Conjugated anti-Rabbit IgG Super Vision Assay Kit (SV0002-1) for IHC(P).
Cross Reactivity	No cross reactivity with other proteins
Form	Lyophilized
Concentration	Add 0.2ml of distilled water will yield a concentration of 500ug/ml.
Purification	Immunogen affinity purified.

Suggested Dilutions

Dilute the sample so that the expected range of concentrations fall within the detection range of this kit.

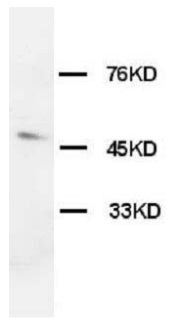
If the expected range of concentration is unknown, a pilot test should be conducted to decide the optimal dilution ratio for your samples.

Some PubMed article(s) citing the expression level of this target are as follows:

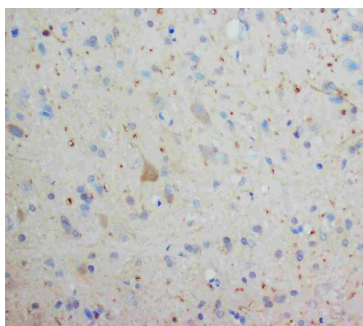
Boster Bio's internal QC testing used:

Immunohistochemistry (Paraffin-embedded Section), 0.5-1ug/ml, Rat, Human, Mouse, By Heat
Western blot, 0.1-0.5ug/ml, Human, Rat, Mouse

Anti-Orexin Receptor 1/HCRT1R Antibody (PA1100) Images



Anti-Orexin Receptor 1 antibody, PA1100, Western blotting
WB: Rat Brain Tissue Lysate



Anti-Orexin Receptor 1 antibody, PA1100, IHC(P)
IHC(P): Rat Brain Tissue

Submit a product review to Biocompare.com

Submit a review of this product to Biocompare.com to receive a \$20 Amazon.com giftcard! Your reviews help your fellow scientists make the right decisions. Thank you for your contribution.



Anti-Orexin Receptor 1/HCRT1R Antibody