

## Anti-SKP2 Antibody

Catalog Number: PA1102

### About SKP2

The F box protein Skp2 (S-phase kinase-associated protein 2) is oncogenic, and its frequent amplification and overexpression correlate with the grade of malignancy of certain tumors. Skp2 controls p300-p53 signaling pathways in cancer cells, making it a potential molecular target for cancer therapy. This gene positively regulates the G (1)-S transition by controlling the stability of several G (1) regulators, such as the cell cycle inhibitor p27. This study provides evidence of a role for an F-box protein in oncogenesis and establishes SKP2 as a protooncogene causally involved in the pathogenesis of lymphomas.

### Overview

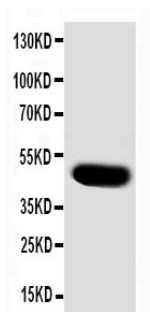
Product Name	Anti-SKP2 Antibody
Reactive Species	Human, Mouse, Rat
Description	Boster Bio Anti-SKP2 Antibody catalog # PA1102. Tested in IHC, WB applications. This antibody reacts with Human, Mouse, Rat.
Application	IHC, WB
Clonality	Polyclonal
Formulation	Each vial contains 5mg BSA, 0.9mg NaCl, 0.2mg Na <sub>2</sub> HPO <sub>4</sub> , 0.05mg Thimerosal, 0.05mg NaN <sub>3</sub> .
Storage Instructions	Store at -20°C for one year from date of receipt. After reconstitution, at 4°C for one month. It can also be aliquotted and stored frozen at -20°C for six months. Avoid repeated freeze-thaw cycles.
Host	Rabbit
Uniprot ID	Q13309

### Technical Details

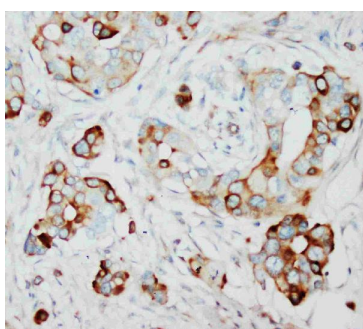
Immunogen	A synthetic peptide corresponding to a sequence at the N-terminus of human SKP2, different from the related rat and mouse sequences by three amino acids.
Predicted Reactive Species	Hamster
Recommended Detection Systems	Boster recommends Enhanced Chemiluminescent Kit with anti-Rabbit IgG (EK1002) for Western blot, and HRP Conjugated anti-Rabbit IgG Super Vision Assay Kit (SV0002-1) for IHC(P).
Cross Reactivity	No cross-reactivity with other proteins
Isotype	Rabbit IgG
Form	Lyophilized
Concentration	Adding 0.2 ml of distilled water will yield a concentration of 500 ug/ml.

Purification	Immunogen affinity purified.
Suggested Dilutions	<p>Dilute the sample so that the expected range of concentrations fall within the detection range of this kit.</p> <p>If the expected range of concentration is unknown, a pilot test should be conducted to decide the optimal dilution ratio for your samples.</p> <p>Some PubMed article(s) citing the expression level of this target are as follows:</p> <p>Boster Bio's internal QC testing used:</p> <p>Immunohistochemistry (Paraffin-embedded Section), 0.5-1ug/ml, Human, Rat, Mouse, By Heat</p> <p>Western blot, 0.1-0.5ug/ml, Human, Rat, Mouse</p>

## Anti-SKP2 Antibody (PA1102) Images



Anti-SKP2 antibody, PA1102, Western blotting  
WB: MCF-7 Cell Lysate



Anti-SKP2 antibody, PA1102, IHC(P)  
IHC(P): Human Mammary Cancer Tissue

## 7 Publications Citing This Product

1. PubMed ID: 24265759, Chen Xm, Bai Y, Zhong Yj, Xie Xi, Long Hw, Yang Yy, Wu Sg, Jia Q, Wang Xh. Plos One. 2013 Nov 12;8(11):E79201. Doi: 10.1371/Journal.Pone.0079201. Ecollection 2013. Wogonin Has Multiple Anti-Cancer Effects By Regulating C-Myc/Skp2/Fbw7?? And Hdac1/...
2. PubMed ID: 23727062, Qiu J, Zhang C, Lv Y, Zhang Y, Zhu C, Wang X, Yao W. Neurochem Int. 2013 Aug;63(2):87-92. Doi: 10.1016/J.NeuInt.2013.05.009. Epub 2013 May 28. Cdh1 Inhibits Reactive Astrocyte Proliferation After Oxygen-Glucose Deprivation And Reperfusion.
3. PubMed ID: 25333250, Chen Xm, Xie Xb, Zhao Q, Wang F, Bai Y, Yin Jq, Jiang H, Xie Xi, Jia Q, Huang G. Mol Med Rep. 2015 Jan;11(1):105-12. Doi: 10.3892/Mmr.2014.2733. Epub 2014 Oct 21. Ampelopsin Induces Apoptosis By Regulating Multiple C-Myc/S-Phase Kinase-Associated ...

Visit [bosterbio.com/anti-skp2-antibody-pa1102-boster.html](http://bosterbio.com/anti-skp2-antibody-pa1102-boster.html) to see all 7 publications.

## Submit a product review to Biocompare.com

Submit a review of this product to Biocompare.com to receive a \$20 Amazon.com giftcard! Your reviews help your fellow scientists make the right decisions. Thank you for your contribution.



Anti-SKP2 Antibody