

Anti-IFITM1 Antibody

Catalog Number: PA1112

About IFITM1

Interferon-induced Transmembrane Protein 1 (IFITM1), also called Interferon-induced Protein 17 (IFI17). IFITM1 activity is required for primordial germ cells (PGCs) transit from the mesoderm into the endoderm, and that it appears to act via a repulsive mechanism, such that PGCs avoid Ifitm1-expressing tissues. It is mapped to Chr.11 and belongs to the family of interferon-induced transmembrane proteins (Ifitm/mil/fragilis), which encodes cell surface proteins that may modulate cell adhesion and influence cell differentiation. Interferon-inducible membrane proteins of approximately 17 kDa have been suggested to play a role in the antiproliferative activity of interferons based on their pattern of induction in interferon-sensitive and -resistant cell lines and the ability of a membrane fraction enriched in 17-kDa proteins to inhibit cell growth.

Overview

Product Name	Anti-IFITM1 Antibody
Reactive Species	Human
Description	Boster Bio Anti-IFITM1 Antibody catalog # PA1112. Tested in IHC, WB applications. This antibody reacts with Human.
Application	IHC, WB
Clonality	Polyclonal
Formulation	Each vial contains 5mg BSA, 0.9mg NaCl, 0.2mg Na2HPO4, 0.05mg Thimerosal, 0.05mg NaN3.
Storage Instructions	Store at -20°C for one year from date of receipt. After reconstitution, at 4°C for one month. It can also be aliquotted and stored frozen at -20°C for six months. Avoid repeated freeze-thaw cycles.
Host	Rabbit
Uniprot ID	P13164

Technical Details

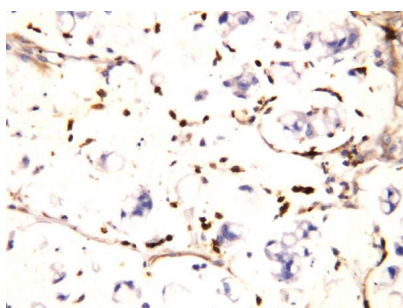
Immunogen	A synthetic peptide corresponding to a sequence at the N-terminus of human IFITM1.
Predicted Reactive Species	Horse, Monkey, Rabbit
Recommended Detection Systems	Boster recommends Enhanced Chemiluminescent Kit with anti-Rabbit IgG (EK1002) for Western blot, and HRP Conjugated anti-Rabbit IgG Super Vision Assay Kit (SV0002-1) for IHC(P) and IHC(F).
Cross Reactivity	No cross-reactivity with other proteins
Isotype	Rabbit IgG
Form	Lyophilized

Concentration	Adding 0.2 ml of distilled water will yield a concentration of 500 ug/ml.
Purification	Immunogen affinity purified.
Suggested Dilutions	<p>Dilute the sample so that the expected range of concentrations fall within the detection range of this kit.</p> <p>If the expected range of concentration is unknown, a pilot test should be conducted to decide the optimal dilution ratio for your samples.</p> <p>Some PubMed article(s) citing the expression level of this target are as follows:</p> <p>Boster Bio's internal QC testing used:</p> <p>Immunohistochemistry (Frozen Section), 0.5-1ug/ml, Human, -</p> <p>Immunohistochemistry (Paraffin-embedded Section), 0.5-1ug/ml, Human, By Heat</p> <p>Western blot, 0.1-0.5ug/ml, Human</p>

Anti-IFITM1 Antibody (PA1112) Images



Anti-IFITM1 antibody, PA1112, Western blotting
Lane 1: SW620 Cell Lysate
Lane 2: CEM Cell Lysate



Anti-IFITM1 antibody, PA1112, IHC(P)
IHC(P): Human Intestinal Cancer Tissue

3 Publications Citing This Product

1. PubMed ID: 20428811, Ma Y, Zhang G, Fu X, Xia O, Zhan C, Li L, Wang Z, Wu B. Oncol Rep. 2010 Jun;23(6):1569-76. Wnt Signaling May Be Activated In A Subset Of Peutz-Jeghers Syndrome Polyps Closely Correlating To Lkb1 Expression.
2. PubMed ID: 19499152, Xu Y, Yang G, Hu G. Acta Biochim Biophys Sin (Shanghai). 2009 Jun;41(6):488-94. Binding Of Ifitm1 Enhances The Inhibiting Effect Of Caveolin-1 On Erk Activation.
3. PubMed ID: 16847454, Yang G, Xu Y, Chen X, Hu G. Oncogene. 2007 Jan 25;26(4):594-603. Epub 2006 Jul 17. Ifitm1 Plays An Essential Role In The Antiproliferative Action Of Interferon-Gamma.

Visit bosterbio.com/anti-ifitm1-antibody-pa1112-boster.html to see all 3 publications.

Submit a product review to Biocompare.com

Submit a review of this product to Biocompare.com to receive a \$20 Amazon.com giftcard! Your reviews help your fellow scientists make the right decisions. Thank you for your contribution.



Anti-IFITM1 Antibody