

Anti-Glut1 SLC2A1 Antibody

Catalog Number: PA1120

About SLC2A1

GLUT1, also known as SLC2A1, is a major glucose transporter in the mammalian blood-brain barrier whose gene is mapped to 1p35-p31.3 and contains 10 exons. It is present at high levels in primate erythrocytes and brain endothelial cells. Not only can transport dehydroascorbic acid (the oxidized form of vitamin C) into the brain, GLUT1 is also likely to contribute to HTLV-associated disorders through interacting with HTLV envelope glycoproteins. Functionally, GLUT1 deficiency causes a decrease in embryonic glucose uptake and apoptosis, which may be involved in diabetic embryopathy, by contrast, an increased expression of GLUT1 in some malignant tumors may suggest a role for glucose-derivative tracers to detect in vivo thyroid cancer metastases by positron-emission tomography scanning.

Overview

Product Name	Anti-Glut1 SLC2A1 Antibody
Reactive Species	Human, Mouse, Rat
Description	Boster Bio Anti-Glut1 SLC2A1 Antibody catalog # PA1120. Tested in IHC, WB applications. This antibody reacts with Human, Mouse, Rat.
Conjugate	FITC
Application	IHC, WB
Clonality	Monoclonal BAM-10
Formulation	Each vial contains 5mg BSA, 0.9mg NaCl, 0.2mg Na ₂ HPO ₄ , 0.05mg Thimerosal, 0.05mg NaN ₃ .
Storage Instructions	The product should be stored undiluted at 4°C and should be protected from prolonged exposure to light. Do not freeze.
Host	Hamster
Uniprot ID	P11166

Technical Details

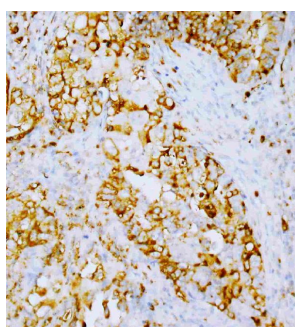
Immunogen	A synthetic peptide corresponding to a sequence at the N-terminal of human Glut1, different from the related mouse sequence by two amino acids, from the related rat sequence by one amino acid.
Predicted Reactive Species	Monkey, Rabbit
Recommended Detection Systems	Boster recommends Enhanced Chemiluminescent Kit with anti-Mouse IgG (EK1001) for Western blot, and HRP Conjugated anti-Mouse IgG Super Vision Assay Kit (SV0001-1) for IHC(P).
Cross Reactivity	No cross reactivity with other proteins
Form	Lyophilized

Concentration	Add 0.2ml of distilled water will yield a concentration of 500ug/ml.
Purification	Immunogen Affinity Purified
Suggested Dilutions	<p>Dilute the sample so that the expected range of concentrations fall within the detection range of this kit.</p> <p>If the expected range of concentration is unknown, a pilot test should be conducted to decide the optimal dilution ratio for your samples.</p> <p>Some PubMed article(s) citing the expression level of this target are as follows:</p> <p>Boster Bio's internal QC testing used:</p> <p>Immunohistochemistry (Paraffin-embedded Section), 0.5-1ug/ml, Human, Mouse, Rat, By Heat</p> <p>Western blot, 0.1-0.5ug/ml, Human, Mouse, Rat</p>

Anti-Glut1 SLC2A1 Antibody (PA1120) Images



Anti-Glut1 antibody, PA1120, Western blotting
Lane 1: HT1080 Cell Lysate
Lane 2: SW620 Cell Lysate



Anti-Glut1 antibody, PA1120, IHC(P)
IHC(P): Human Adenocarcinoma Endometrium Tissue

6 Publications Citing This Product

1. PubMed ID: 23983599, Yan Sx, Luo Xm, Zhou Sh, Bao Yy, Fan J, Lu Zj, Liao Xb, Huang Yp, Wu Tt, Wang Qy. Int J Med Sci. 2013 Aug 21;10(10):1375-86. Doi: 10.7150/Ijms.6855. Ecollection 2013. Effect Of Antisense Oligodeoxynucleotides Glucose Transporter-1 On Enhancement O...
2. PubMed ID: 23375385, Cheng Y, Chen G, Hong L, Zhou L, Hu M, Li B, Huang J, Xia L, Li C. Ann Diagn Pathol. 2013 Jun;17(3):305-11. Doi: 10.1016/J.Anndiagpath.2012.12.002. Epub 2013 Feb 1. How Does Hypoxia Inducible Factor-1?? Participate In Enhancing The Glycolysis Acti...
3. PubMed ID: 22835601, Xu Yy, Bao Yy, Zhou Sh, Fan J. Arch Med Res. 2012 Jul;43(5):395-401. Doi: 10.1016/J.Arcmed.2012.07.003. Epub 2012 Jul 24. Effect On The Expression Of Mmp-2, Mt-Mmp In Laryngeal Carcinoma Hep-2 Cell Line By Antisense Glucose Transporter-1.

Visit bosterbio.com/anti-glut1-antibody-pa1120-boster.html to see all 6 publications.

Submit a product review to Biocompare.com

Submit a review of this product to Biocompare.com to receive a \$20 Amazon.com giftcard! Your reviews help your fellow scientists make the right decisions. Thank you for your contribution.



Anti-Glut1 SLC2A1 Antibody