

Anti-CD18/ITGB2 Antibody

Catalog Number: PA1124

About ITGB2

The beta-2 integrin chain gene is designated ITGB2 and the leukocyte antigen has been designated CD18. The 3 alpha integrin chains associated individually with the beta-2 chain as a heterodimer have gene designations of ITGAL, ITGAM, and ITGAX, and leukocyte antigen designations of CD11A, CD11B, and CD11C, respectively. The expression of CD18 was increased in lymphoblastoid cells from persons with Down syndrome, consistent with the location of the gene on chromosome 21. The ITGB2 gene spans approximately 40 kb and contains 16 exons and all exon/intron boundaries conform to the GT/AG splicing consensus. Furthermore, ITGB2 was constitutively clustered. Although it was expressed on the cell surface at normal levels and was capable of function following extracellular stimulation, it could not be activated via the "inside-out" signaling pathways.

Overview

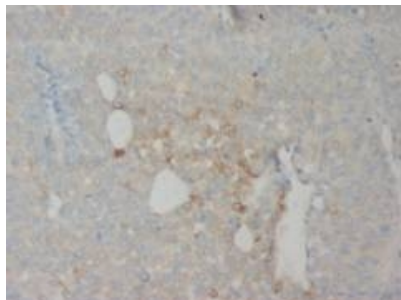
Product Name	Anti-CD18/ITGB2 Antibody
Reactive Species	Human
Description	Boster Bio Anti-CD18/ITGB2 Antibody catalog # PA1124. Tested in WB applications. This antibody reacts with Human.
Application	WB
Clonality	Polyclonal JLT-12
Formulation	Each vial contains 5mg BSA, 0.9mg NaCl, 0.2mg Na2HPO4, 0.05mg Thimerosal, 0.05mg NaN3.
Storage Instructions	Store at -20°C for one year from date of receipt. After reconstitution, at 4°C for one month. It can also be aliquotted and stored frozen at -20°C for six months. Avoid repeated freeze-thaw cycles.
Host	Rabbit
Uniprot ID	P05107

Technical Details

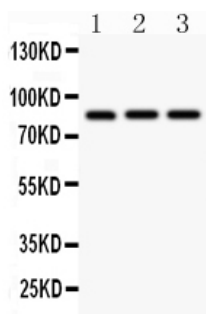
Immunogen	A synthetic peptide corresponding to a sequence at the N-terminus of human CD18, different from the related mouse sequence by five amino acids.
Predicted Reactive Species	Bovine
Recommended Detection Systems	Boster recommends Enhanced Chemiluminescent Kit with anti-Rabbit IgG (EK1002) for Western blot, and HRP Conjugated anti-Rabbit IgG Super Vision Assay Kit (SV0002-1) for IHC(P).
Cross Reactivity	No cross reactivity with other proteins
Isotype	Rabbit IgG

Form	Lyophilized
Concentration	Adding 0.2 ml of distilled water will yield a concentration of 500 ug/ml.
Purification	Immunogen affinity purified.
Suggested Dilutions	<p>Dilute the sample so that the expected range of concentrations fall within the detection range of this kit.</p> <p>If the expected range of concentration is unknown, a pilot test should be conducted to decide the optimal dilution ratio for your samples.</p> <p>Some PubMed article(s) citing the expression level of this target are as follows:</p> <p>Boster Bio's internal QC testing used:</p> <p>Immunohistochemistry (Paraffin-embedded Section), 0.5-1ug/ml, Human, By Heat</p> <p>Western blot, 0.1-0.5ug/ml, Human</p>

Anti-CD18/ITGB2 Antibody (PA1124) Images



Anti-CD18 antibody, PA1124, IHC(P)
IHC(P): Human Uroepithelium Cancer Tissue



Anti-CD18 antibody, PA1124, Western blotting
All lanes: Anti CD18 (PA1124) at 0.5ug/ml
Lane 1: HELA Whole Cell Lysate at 40ug
Lane 2: JURKAT Whole Cell Lysate at 40ug
Lane 3: HT1080 Whole Cell Lysate at 40ug
Predicted bind size: 85KD
Observed bind size: 85KD

Submit a product review to Biocompare.com

Submit a review of this product to Biocompare.com to receive a \$20 Amazon.com giftcard! Your reviews help your fellow scientists make the right decisions. Thank you for your contribution.



Anti-CD18/ITGB2 Antibody