

Anti-Neuropeptide Y receptor type 1 NPY1R Antibody

Catalog Number: PA1130

About NPY1R

NPY1R, Neuropeptide Y receptor Y1, is a protein that in humans is encoded by the NPY1R gene. NPY receptor is a member of the G protein-coupled receptor superfamily. The NPY Y1 receptor gene has 3 exons. By high resolution fluorescence in situ hybridization, the NPY1R gene is localized to chromosome 4q31.3-q32. NPY is one of the most abundant neuropeptides in the mammalian nervous system and exhibits a diverse range of important physiologic activities, including effects on psychomotor activity, food intake, regulation of central endocrine secretion, and potent vasoactive effects on the cardiovascular system. Two major subtypes of NPY (Y1 and Y2) have been defined by pharmacologic criteria. NPY receptors have been identified in a variety of tissues, including brain, spleen, small intestine, kidney, testis, placenta, and aortic smooth muscle.

Overview

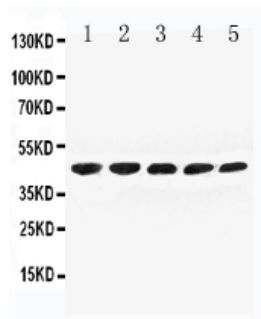
Product Name	Anti-Neuropeptide Y receptor type 1 NPY1R Antibody
Reactive Species	Human, Mouse, Rat
Description	Boster Bio Anti-Neuropeptide Y receptor type 1 NPY1R Antibody catalog # PA1130. Tested in IHC, WB applications. This antibody reacts with Human, Mouse, Rat.
Conjugate	FITC
Application	IHC, WB
Clonality	Monoclonal BAM-10
Formulation	Each vial contains 5mg BSA, 0.9mg NaCl, 0.2mg Na2HPO4, 0.05mg Thimerosal, 0.05mg NaN3.
Storage Instructions	The product should be stored undiluted at 4°C and should be protected from prolonged exposure to light. Do not freeze.
Host	Hamster
Uniprot ID	P25929

Technical Details

Immunogen	A synthetic peptide corresponding to a sequence at the C-terminus of human NPY1R, identical to the related rat and mouse sequences.
Predicted Reactive Species	Bovine
Recommended Detection Systems	Boster recommends Enhanced Chemiluminescent Kit with anti-Mouse IgG (EK1001) for Western blot, and HRP Conjugated anti-Mouse IgG Super Vision Assay Kit (SV0001-1) for IHC(P).
Cross Reactivity	No cross reactivity with other proteins
Form	Lyophilized

Concentration	Add 0.2ml of distilled water will yield a concentration of 500ug/ml.
Purification	Immunogen Affinity Purified
Suggested Dilutions	<p>Dilute the sample so that the expected range of concentrations fall within the detection range of this kit.</p> <p>If the expected range of concentration is unknown, a pilot test should be conducted to decide the optimal dilution ratio for your samples.</p> <p>Some PubMed article(s) citing the expression level of this target are as follows:</p> <p>Boster Bio's internal QC testing used:</p> <p>Immunohistochemistry (Paraffin-embedded Section), 0.5-1ug/ml, Human, Rat, Mouse, By Heat</p> <p>Western blot, 0.1-0.5ug/ml, Human, Rat, Mouse</p>

Anti-Neuropeptide Y receptor type 1 NPY1R Antibody (PA1130) Images



Anti-NPY1R antibody, PA1130, Western blotting

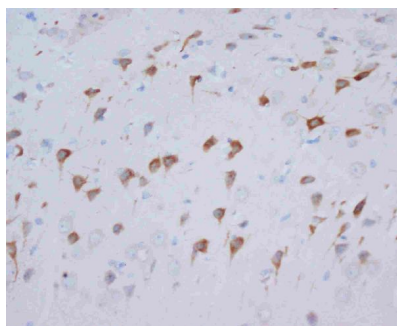
Lane 1: U87 Cell Lysate

Lane 2: U87 Cell Lysate

Lane 3: SMMC Cell Lysate

Lane 4: MCF-7 Cell Lysate

Lane 5: HELA Cell Lysate



Anti-NPY1R antibody, PA1130, IHC(P)

IHC(P): Rat Brain Tissue

Submit a product review to Biocompare.com

Submit a review of this product to Biocompare.com to receive a \$20 Amazon.com giftcard! Your reviews help your fellow scientists make the right decisions. Thank you for your contribution.



Anti-Neuropeptide Y receptor type 1 NPY1R Antibody