

Anti-OPCML Antibody

Catalog Number: PA1131

About OPCML

Opioid-binding protein/cell adhesion molecule-like (OPCML), (also called opioid-binding cell adhesion molecule (OBCAM). OPCML is a member of the IgLON family of immunoglobulin (Ig) domain-containing glycosylphosphatidylinositol (GPI)-anchored cell adhesion molecules, as an excellent candidate for the 11q25 ovarian cancer TSG in EOC. The OPCML gene comprises 7 exons, spans approximately 600 kb, and is transcribed from telomere to centromere. And due to the lack of transmembrane domains necessary for signal transduction, it is improbable that OBCAM acts independently as an opioid receptor; more likely, it plays an important accessory role in opioid receptor function.

Overview

Product Name	Anti-OPCML Antibody
Reactive Species	Human, Mouse, Rat
Description	Boster Bio Anti-OPCML Antibody catalog # PA1131. Tested in IHC, WB applications. This antibody reacts with Human, Mouse, Rat.
Application	IHC, WB
Clonality	Polyclonal JLT-12
Formulation	Each vial contains 5mg BSA, 0.9mg NaCl, 0.2mg Na ₂ HPO ₄ , 0.05mg Thimerosal, 0.05mg NaN ₃ .
Storage Instructions	Store at -20°C for one year from date of receipt. After reconstitution, at 4°C for one month. It can also be aliquotted and stored frozen at -20°C for six months. Avoid repeated freeze-thaw cycles.
Host	Rabbit
Uniprot ID	Q14982

Technical Details

Immunogen	A synthetic peptide corresponding to a sequence at the C-terminus of human OPCML, identical to the related rat and mouse sequences.
Predicted Reactive Species	Hamster
Recommended Detection Systems	Boster recommends Enhanced Chemiluminescent Kit with anti-Rabbit IgG (EK1002) for Western blot, and HRP Conjugated anti-Rabbit IgG Super Vision Assay Kit (SV0002-1) for IHC(P).
Cross Reactivity	No cross reactivity with other proteins
Form	Lyophilized
Concentration	Adding 0.2 ml of distilled water will yield a concentration of 500 ug/ml.
Purification	Immunogen affinity purified.

Suggested Dilutions

Dilute the sample so that the expected range of concentrations fall within the detection range of this kit.

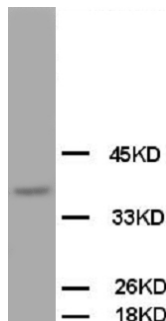
If the expected range of concentration is unknown, a pilot test should be conducted to decide the optimal dilution ratio for your samples.

Some PubMed article(s) citing the expression level of this target are as follows:

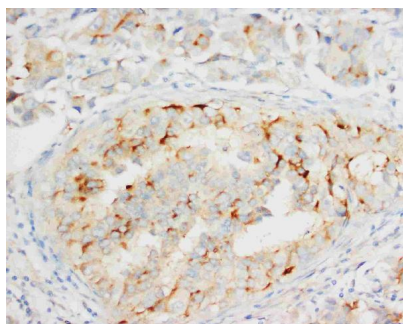
Boster Bio's internal QC testing used:

Immunohistochemistry (Paraffin-embedded Section), 0.5-1ug/ml, Human, Rat, Mouse, By Heat
Western blot, 0.1-0.5ug/ml, Human, Rat, Mouse

Anti-OPCML Antibody (PA1131) Images



Anti-OPCML antibody, PA1131, Western blotting
WB: Rat Brain Tissue Lysate



Anti-OPCML antibody, PA1131, IHC(P)
IHC(P): Human Mammary Cancer Tissue

1 Publications Citing This Product

1. PubMed ID: 17109515, Wang L, Zhu Js, Song Mq, Chen Gq, Chen JI. World J Gastroenterol. 2006 Nov 21;12(43):6949-54. Comparison Of Gene Expression Profiles Between Primary Tumor And Metastatic Lesions In Gastric Cancer Patients Using Laser Microdissection And Cdna Micro...

Visit bosterbio.com/anti-opcml-antibody-pa1131-boster.html to see all 1 publications.

Submit a product review to Biocompare.com

Submit a review of this product to Biocompare.com to receive a \$20 Amazon.com giftcard! Your reviews help your fellow scientists make the right decisions. Thank you for your contribution.



Anti-OPCML Antibody