

Anti-CCR6/CCR6 Antibody

Catalog Number: PA1201

About CCR6

CCR6, also termed CKRL3, encodes a 369-amino acid polypeptide with greatest similarity to the family of alpha-chemokine-binding receptors. Unlike most chemokine receptor genes, it is encoded by more than 1 exon. Weakly expressed as a 4-kb transcript in spleen, lymph nodes, peripheral blood lymphocytes and appendix, CCR6 gene is located at 6q27. As the receptor for MIP-3-alpha, its activation leads to phospholipase C-dependent intracellular Ca (2+) mobilization. Additionally, CCR6 are markedly upregulated in psoriasis.

Overview

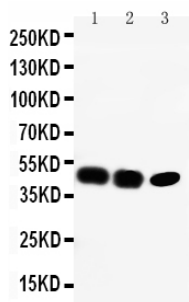
Product Name	Anti-CCR6/CCR6 Antibody
Reactive Species	Human, Mouse, Rat
Description	Boster Bio Anti-CCR6/CCR6 Antibody catalog # PA1201. Tested in WB applications. This antibody reacts with Human, Mouse, Rat.
Application	WB
Clonality	Polyclonal
Formulation	Each vial contains 4mg Trehalose, 0.9mg NaCl, 0.2mg Na2HPO4, 0.05mg NaN3.
Storage Instructions	Store at -20°C for one year from date of receipt. After reconstitution, at 4°C for one month. It can also be aliquotted and stored frozen at -20°C for six months. Avoid repeated freeze-thaw cycles.
Host	Rabbit
Uniprot ID	P51684

Technical Details

Immunogen	A synthetic peptide corresponding to a sequence at the C-terminus of human CCR6, different from the related rat and mouse sequences by two amino acids.
Predicted Reactive Species	Canine, Monkey
Recommended Detection Systems	Boster recommends Enhanced Chemiluminescent Kit with anti-Rabbit IgG (EK1002) for Western blot.
Cross Reactivity	No cross-reactivity with other proteins
Isotype	Rabbit IgG
Form	Lyophilized
Concentration	Adding 0.2 ml of distilled water will yield a concentration of 500 ug/ml.

Purification	Immunogen affinity purified.
Suggested Dilutions	<p>Dilute the sample so that the expected range of concentrations fall within the detection range of this kit.</p> <p>If the expected range of concentration is unknown, a pilot test should be conducted to decide the optimal dilution ratio for your samples.</p> <p>Some PubMed article(s) citing the expression level of this target are as follows:</p> <p>Boster Bio's internal QC testing used:</p> <p>Western blot, 0.1-0.5ug/ml, Human, Rat, Mouse</p>

Anti-CCR6/CCR6 Antibody (PA1201) Images



Anti-CCR6 antibody, PA1201, Western blotting

Lane 1: Rat Liver Tissue Lysate

Lane 2: SW620 Cell Lysate

Lane 3: CEM Cell Lysate

Submit a product review to Biocompare.com

Submit a review of this product to Biocompare.com to receive a \$20 Amazon.com giftcard! Your reviews help your fellow scientists make the right decisions. Thank you for your contribution.



Anti-CCR6/CCR6 Antibody