

Anti-GHR/Growth Hormone R Antibody

Catalog Number: PA1206

About Ghr

The GHR locus to human chromosome 5p13.1-p12 and to mouse chromosome 15. Additionally, its gene has 9 exons that encode the receptor and several additional exons in the 5-prime untranslated region. The coding exons span at least 87 kb. GHR consists of an extracellular domain of 246 amino acids, a single transmembrane domain, and a cytoplasmic domain. Exons 3 to 7 encode the extracellular domain. There are 2 isoforms of GHR in humans, generated by retention or exclusion of exon 3 during splicing: a full-length isoform and an isoform that lacks exon 3 (d3GHR). Furthermore, the two isoforms of GHR are expressed in the placenta and appeared to be due to alternative splicing. In cirrhosis, there is a state of acquired GH resistance, as defined by high circulating GH levels with low IGF1 levels. Moreover, Mutations in the GHR gene have been demonstrated as the cause of Laron syndrome, also known as the growth hormone insensitivity syndrome (GHIS).

Overview

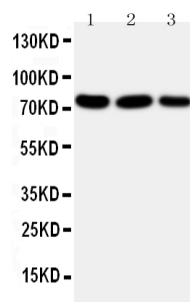
Product Name	Anti-GHR/Growth Hormone R Antibody
Reactive Species	Human, Mouse, Rat
Description	Boster Bio Anti-GHR/Growth Hormone R Antibody catalog # PA1206. Tested in IHC, WB applications. This antibody reacts with Human, Mouse, Rat.
Conjugate	FITC
Application	IHC, WB
Clonality	Monoclonal BAM-10
Formulation	Each vial contains 5mg BSA, 0.9mg NaCl, 0.2mg Na ₂ HPO ₄ , 0.05mg Thimerosal, 0.05mg NaN ₃ .
Storage Instructions	The product should be stored undiluted at 4°C and should be protected from prolonged exposure to light. Do not freeze.
Host	Hamster
Uniprot ID	P16882

Technical Details

Immunogen	A synthetic peptide corresponding to a sequence at the N-terminal of human GHR, different from the related rat sequence by one amino acid.
Predicted Reactive Species	Hamster
Recommended Detection Systems	Boster recommends Enhanced Chemiluminescent Kit with anti-Mouse IgG (EK1001) for Western blot, and HRP Conjugated anti-Mouse IgG Super Vision Assay Kit (SV0001-1) for IHC(P).
Cross Reactivity	No cross reactivity with other proteins

Form	Lyophilized
Concentration	Add 0.2ml of distilled water will yield a concentration of 500ug/ml.
Purification	Immunogen Affinity Purified
Suggested Dilutions	<p>Dilute the sample so that the expected range of concentrations fall within the detection range of this kit.</p> <p>If the expected range of concentration is unknown, a pilot test should be conducted to decide the optimal dilution ratio for your samples.</p> <p>Some PubMed article(s) citing the expression level of this target are as follows:</p> <p>Boster Bio's internal QC testing used:</p> <p>Immunohistochemistry (Paraffin-embedded Section), 0.5-1ug/ml, Human, By Heat</p> <p>Western blot, 0.1-0.5ug/ml, Human, Rat, Mouse</p>

Anti-GHR/Growth Hormone R Antibody (PA1206) Images

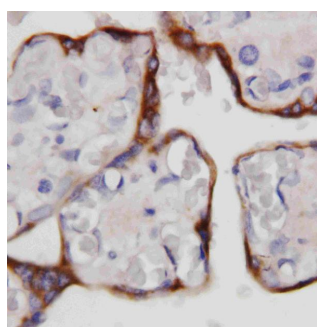


Anti-GHR antibody, PA1206, Western blotting

Lane 1: MCF-7 Cell Lysate

Lane 2: HELA Cell Lysate

Lane 3: JURKAT Cell Lysate



Anti-GHR antibody, PA1206, IHC(P)

IHC(P): Human Placenta Tissue

Submit a product review to Biocompare.com

Submit a review of this product to Biocompare.com to receive a \$20 Amazon.com giftcard! Your reviews help your fellow scientists make the right decisions. Thank you for your contribution.



Anti-GHR/Growth Hormone R Antibody