

Anti-MMP8 Antibody

Catalog Number: PA1207

About MMP8

MMP8 (Matrix metalloproteinase 8) is a member of the family of matrix metalloproteinases. It is distinct from the collagenase of skin fibroblasts and synovial cells in substrate specificity and immunologic crossreactivity. MMP8 was mapped to 11q21-q22. MMP8 is an enzyme that degrades fibrillar collagens imparting strength to the fetal membranes, is expressed by leukocytes and chorionic cytotrophoblast cells. The enzyme exhibits 58% homology to human fibroblast collagenase and has the same domain structure. It consists of a 20-residue signal peptide, and an 80-residue propeptide that is lost on autolytic activation by cleavage of an M-L bond. MMP8 was found to possess 57% identity with the deduced protein sequence for fibroblast collagenase with 72% chemical similarity. Matrix metalloproteinases (MMPs) have fundamental roles in tumor progression, but most clinical trials with MMP inhibitors have not shown improvements in individuals with cancer. MMP8 has a paradoxical protective role in cancer and provides a genetic model to evaluate the molecular basis of gender differences in cancer susceptibility.

Overview

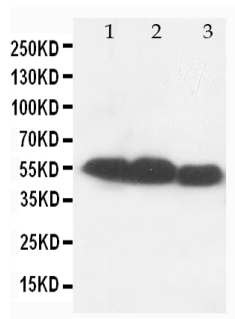
Product Name	Anti-MMP8 Antibody
Reactive Species	Human, Mouse, Rat
Description	Boster Bio Anti-MMP8 Antibody catalog # PA1207. Tested in IHC, WB applications. This antibody reacts with Human, Mouse, Rat.
Conjugate	FITC
Application	IHC, WB
Clonality	Monoclonal BAM-10
Formulation	Each vial contains 5mg BSA, 0.9mg NaCl, 0.2mg Na2HPO4, 0.05mg Thimerosal, 0.05mg NaN3.
Storage Instructions	The product should be stored undiluted at 4°C and should be protected from prolonged exposure to light. Do not freeze.
Host	Hamster
Uniprot ID	P22894

Technical Details

Immunogen	A synthetic peptide corresponding to a sequence at the N-terminus of human MMP8, different from the related rat and mouse sequences by three amino acids.
Predicted Reactive Species	Horse, Monkey
Recommended Detection Systems	Boster recommends Enhanced Chemiluminescent Kit with anti-Mouse IgG (EK1001) for Western blot, and HRP Conjugated anti-Mouse IgG Super Vision Assay Kit (SV0001-1) for IHC(P).
Cross Reactivity	No cross reactivity with other proteins

Form	Lyophilized
Concentration	Add 0.2ml of distilled water will yield a concentration of 500ug/ml.
Purification	Immunogen Affinity Purified
Suggested Dilutions	<p>Dilute the sample so that the expected range of concentrations fall within the detection range of this kit.</p> <p>If the expected range of concentration is unknown, a pilot test should be conducted to decide the optimal dilution ratio for your samples.</p> <p>Some PubMed article(s) citing the expression level of this target are as follows:</p> <p>Boster Bio's internal QC testing used:</p> <p>Immunohistochemistry (Paraffin-embedded Section), 0.5-1ug/ml, Human, Rat, Mouse, By Heat</p> <p>Western blot, 0.1-0.5ug/ml, Human, Rat, Mouse</p>

Anti-MMP8 Antibody (PA1207) Images



Anti-MMP8 antibody, PA1207, Western blotting

Lane 1: Rat Lung Tissue Lysate

Lane 2: Rat Testis Tissue Lysate

Lane 3: Rat Ovary Tissue Lysate

Submit a product review to Biocompare.com

Submit a review of this product to Biocompare.com to receive a \$20 Amazon.com giftcard! Your reviews help your fellow scientists make the right decisions. Thank you for your contribution.



Anti-MMP8 Antibody