

Anti-beta Catenin/CTNNB1 Antibody

Catalog Number: PA1212-1

About CTNNB1

Catenins are proteins found in complexes with cadherin cell adhesion molecules of animal cells. The first two catenins that were identified became known as alpha-catenin and beta-catenin. Alpha-catenin can bind to beta-catenin and can also bind actin. Beta-catenin binds the cytoplasmic domain of some cadherins. Beta-catenin is an adherens junction protein. It plays an important role in various aspects of liver biology including liver development (both embryonic and postnatal), liver regeneration following partial hepatectomy. HGF-induced hepatomegaly, liver zonation, and pathogenesis of liver cancer.

Overview

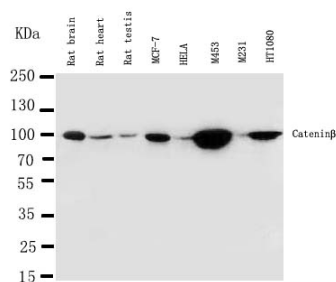
Product Name	Anti-beta Catenin/CTNNB1 Antibody
Reactive Species	Human, Mouse, Rat
Description	Boster Bio Anti-beta Catenin/CTNNB1 Antibody catalog # PA1212-1. Tested in IHC, ICC, WB applications. This antibody reacts with Human, Mouse, Rat.
Application	IHC, ICC, WB
Clonality	Polyclonal
Formulation	Each vial contains 5mg BSA, 0.9mg NaCl, 0.2mg Na ₂ HPO ₄ , 0.05mg Thimerosal, 0.05mg NaN ₃ .
Storage Instructions	Store at -20°C for one year from date of receipt. After reconstitution, at 4°C for one month. It can also be aliquotted and stored frozen at -20°C for six months. Avoid repeated freeze-thaw cycles.
Host	Rabbit
Uniprot ID	P35222

Technical Details

Immunogen	A synthetic peptide corresponding to a sequence at the N-terminus of human beta Catenin, identical to the related rat and mouse sequences.
Predicted Reactive Species	Hamster
Recommended Detection Systems	Boster recommends Enhanced Chemiluminescent Kit with anti-Rabbit IgG (EK1002) for Western blot, and HRP Conjugated anti-Rabbit IgG Super Vision Assay Kit (SV0002-1) for IHC(P), IHC(F) and ICC.
Cross Reactivity	No cross-reactivity with other proteins
Isotype	Rabbit IgG
Form	Lyophilized

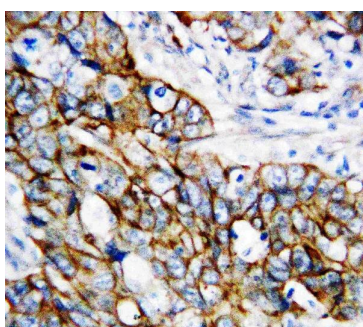
Concentration	Adding 0.2 ml of distilled water will yield a concentration of 500 ug/ml.
Purification	Immunogen affinity purified.
Suggested Dilutions	<p>Dilute the sample so that the expected range of concentrations fall within the detection range of this kit.</p> <p>If the expected range of concentration is unknown, a pilot test should be conducted to decide the optimal dilution ratio for your samples.</p> <p>Some PubMed article(s) citing the expression level of this target are as follows:</p> <p>Boster Bio's internal QC testing used:</p> <p>Immunocytochemistry , 0.5-1ug/ml, Human, Mouse, Rat</p> <p>Immunohistochemistry (Frozen Section), 0.5-1ug/ml, Mouse, Rat, Human</p> <p>Immunohistochemistry (Paraffin-embedded Section), 0.5-1ug/ml, Human, Mouse, Rat, By Heat</p> <p>Western blot, 0.1-0.5ug/ml, Human, Rat, Mouse</p>

Anti-beta Catenin/CTNNB1 Antibody (PA1212-1) Images



Anti-beta Catenin antibody, PA1212-1, Western blotting

Lane 1: Rat Brain Tissue Lysate
Lane 2: Rat Heart Tissue Lysate
Lane 3: Rat Testis Tissue Lysate
Lane 4: MCF-7 Cell Lysate
Lane 5: HELA Cell Lysate
Lane 6: M453 Cell Lysate
Lane 7: M231 Cell Lysate
Lane 8: HT1080 Cell Lysate



Anti-beta Catenin antibody, PA1212-1, IHC(P)
IHC(P): Human Mammary Cancer Tissue

20 Publications Citing This Product

1. PubMed ID: 32519176, Piao HY,Guo S,Wang Y,Zhang J.Exosome-transmitted lncRNA PCGEM1 promotes invasive and metastasis in gastric cancer by maintaining the stability of SNAI1.Clin Transl Oncol.2020 Jun 9.doi:10.1007/s12094-020-02412-9.Epub ahead of print.PMID:32519176.
2. PubMed ID: 25995040, Prolonged overexpression of Wnt10b induces epidermal keratinocyte transformation through activating EGF pathway
3. PubMed ID: 25286828, Combination of lithium chloride and pEGFP-N1-BmK CT effectively decreases proliferation and migration of C6 glioma cells

Visit bosterbio.com/anti-beta-catenin-antibody-pa1212-1-boster.html to see all 20 publications.

Submit a product review to Biocompare.com

Submit a review of this product to Biocompare.com to receive a \$20 Amazon.com giftcard! Your reviews help your fellow scientists make the right decisions. Thank you for your contribution.



Anti-beta Catenin/CTNNB1 Antibody