

Anti-P2X3/P2RX3 Antibody

Catalog Number: PA1213

About P2RX3

Purinergic receptor P2X, ligand-gated ion channel, 3, also known as P2X3, is a human gene. Its gene is mapped to 11q12. P2X purinoceptors are 397 to 492 amino acids long and have a predicted structure of 2 short intracellular domains, 2 transmembrane-spanning regions, and a large extracellular domain. The P2X3 subunit has 43% and 47% identity with P2X1 and P2X2, respectively; 10 cysteine residues are conserved in all 3 subtypes, so that tertiary structures may also be conserved. P2X3 was the only ligand-gated channel known to be expressed exclusively by a subset of sensory neurons. The remarkable selectivity of expression of the channel, coupled with a sensory neuron-like pharmacology, suggested that it may transduce ATP-evoked nociceptor activation. If ATP, and more specifically, P2X3 purinoceptors are involved in nociception, then the development of an antagonist selective for P2X3 could prove useful in pain relief. Lack of P2X3 in other tissues than sensory ganglia could afford a degree of specificity, leading to fewer side effects.

Overview

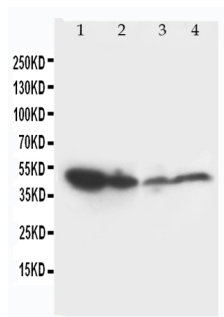
Product Name	Anti-P2X3/P2RX3 Antibody
Reactive Species	Human, Mouse, Rat
Description	Boster Bio Anti-P2X3/P2RX3 Antibody catalog # PA1213. Tested in WB applications. This antibody reacts with Human, Mouse, Rat.
Conjugate	FITC
Application	WB
Clonality	Monoclonal BAM-10
Formulation	Each vial contains 5mg BSA, 0.9mg NaCl, 0.2mg Na2HPO4, 0.05mg Thimerosal, 0.05mg NaN3.
Storage Instructions	The product should be stored undiluted at 4°C and should be protected from prolonged exposure to light. Do not freeze.
Host	Hamster
Uniprot ID	P56373

Technical Details

Immunogen	A synthetic peptide corresponding to a sequence at the C-terminus of human P2X3, different from the related mouse and rat sequences by one amino acid.
Predicted Reactive Species	Bovine
Recommended Detection Systems	Boster recommends Enhanced Chemiluminescent Kit with anti-Mouse IgG (EK1001) for Western blot.
Cross Reactivity	No cross reactivity with other proteins

Form	Lyophilized
Concentration	Add 0.2ml of distilled water will yield a concentration of 500ug/ml.
Purification	Immunogen Affinity Purified
Suggested Dilutions	<p>Dilute the sample so that the expected range of concentrations fall within the detection range of this kit.</p> <p>If the expected range of concentration is unknown, a pilot test should be conducted to decide the optimal dilution ratio for your samples.</p> <p>Some PubMed article(s) citing the expression level of this target are as follows:</p> <p>Boster Bio's internal QC testing used:</p> <p>Western blot, 0.1-0.5ug/ml, Human, Rat, Mouse</p>

Anti-P2X3/P2RX3 Antibody (PA1213) Images



Anti-P2X3 antibody, PA1213, Western blotting

Lane 1: Rat Heart Tissue Lysate

Lane 2: Rat Skeletal Muscle Tissue Lysate

Lane 3: SMMC Cell Lysate

Lane 4: HT1080 Cell Lysate

Lane 5: Marker

1 Publications Citing This Product

1. PubMed ID: 20705122, Lin J, Li G, Den X, Xu C, Liu S, Gao Y, Liu H, Zhang J, Li X, Liang S. Brain Res Bull. 2010 Oct 30;83(5):284-91. Doi: 10.1016/J.Brainresbull.2010.08.002. Epub 2010 Aug 10. Vegf And Its Receptor-2 Involved In Neuropathic Pain Transmission Mediated ...

Visit bosterbio.com/anti-p2x3-antibody-pa1213-boster.html to see all 1 publications.

Submit a product review to Biocompare.com

Submit a review of this product to Biocompare.com to receive a \$20 Amazon.com giftcard! Your reviews help your fellow scientists make the right decisions. Thank you for your contribution.



Anti-P2X3/P2RX3 Antibody