

Anti-Notch1 Antibody

Catalog Number: PA1215

About NOTCH1

Notch proteins are single-pass transmembrane receptors that regulate cell fate decisions during development. The Notch family includes 4 receptors, NOTCH1, NOTCH2, NOTCH3, and NOTCH4, whose ligands include JAG1, JAG2, DLL1), DLL3, and DLL4. Notch homolog 1, translocation-associated (NOTCH1), is a human gene encoding a single-pass transmembrane receptor. It functions as a receptor for membrane bound ligands, and may play multiple roles during development. NOTCH1 may normally coordinates the process of somitogenesis, and the activated Notch 1 and Notch 3 promote differentiation of progenitor cells into astroglia.

Overview

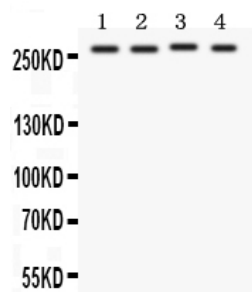
Product Name	Anti-Notch1 Antibody
Reactive Species	Human
Description	Boster Bio Anti-Notch1 Antibody catalog # PA1215. Tested in WB applications. This antibody reacts with Human.
Application	WB
Clonality	Polyclonal
Formulation	Each vial contains 5mg BSA, 0.9mg NaCl, 0.2mg Na2HPO4, 0.05mg Thimerosal, 0.05mg NaN3.
Storage Instructions	Store at -20°C for one year from date of receipt. After reconstitution, at 4°C for one month. It can also be aliquotted and stored frozen at -20°C for six months. Avoid repeated freeze-thaw cycles.
Host	Rabbit
Uniprot ID	P46531

Technical Details

Immunogen	A synthetic peptide corresponding to a sequence in the middle region of human Notch1.
Predicted Reactive Species	Hamster
Recommended Detection Systems	Boster recommends Enhanced Chemiluminescent Kit with anti-Rabbit IgG (EK1002) for Western blot.
Cross Reactivity	No cross-reactivity with other proteins
Isotype	Rabbit IgG
Form	Lyophilized
Concentration	Adding 0.2 ml of distilled water will yield a concentration of 500 ug/ml.

Purification	Immunogen affinity purified.
Suggested Dilutions	<p>Dilute the sample so that the expected range of concentrations fall within the detection range of this kit.</p> <p>If the expected range of concentration is unknown, a pilot test should be conducted to decide the optimal dilution ratio for your samples.</p> <p>Some PubMed article(s) citing the expression level of this target are as follows:</p> <p>Boster Bio's internal QC testing used:</p> <p>Western blot, 0.1-0.5ug/ml, Human</p>

Anti-Notch1 Antibody (PA1215) Images



Anti-Notch1 antibody, PA1215, Western blotting

All lanes: Anti Notch1 (PA1215) at 0.5ug/ml

Lane 1: MCF-7 Whole Cell Lysate at 40ug

Lane 2: HELA Whole Cell Lysate at 40ug

Lane 3: JURKAT Whole Cell Lysate at 40ug

Lane 4: COLO320 Whole Cell Lysate at 40ug

Predicted bind size: 272KD

Observed bind size: 272KD

1 Publications Citing This Product

1. PubMed ID: 25536154, Mi L, Chen Y, Zheng X, Li Y, Zhang Q, Mo D, Yang G. J Cell Biochem. 2015 Jul;116(7):1195-204. Doi: 10.1002/Jcb.25065. Microrna-139-5P Suppresses 3T3-L1 Preadipocyte Differentiation Through Notch And Irs1/Pi3K/Akt Insulin Signaling Pathways.

Visit bosterbio.com/anti-notch1-antibody-pa1215-boster.html to see all 1 publications.

Submit a product review to Biocompare.com

Submit a review of this product to Biocompare.com to receive a \$20 Amazon.com giftcard! Your reviews help your fellow scientists make the right decisions. Thank you for your contribution.



Anti-Notch1 Antibody